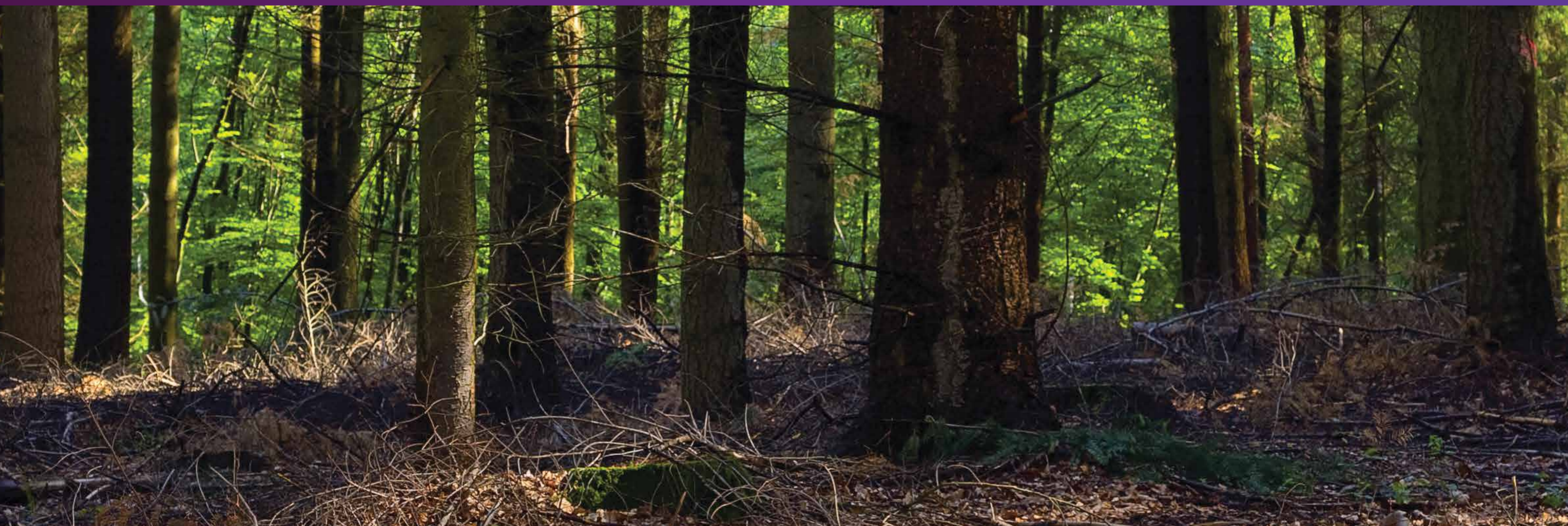


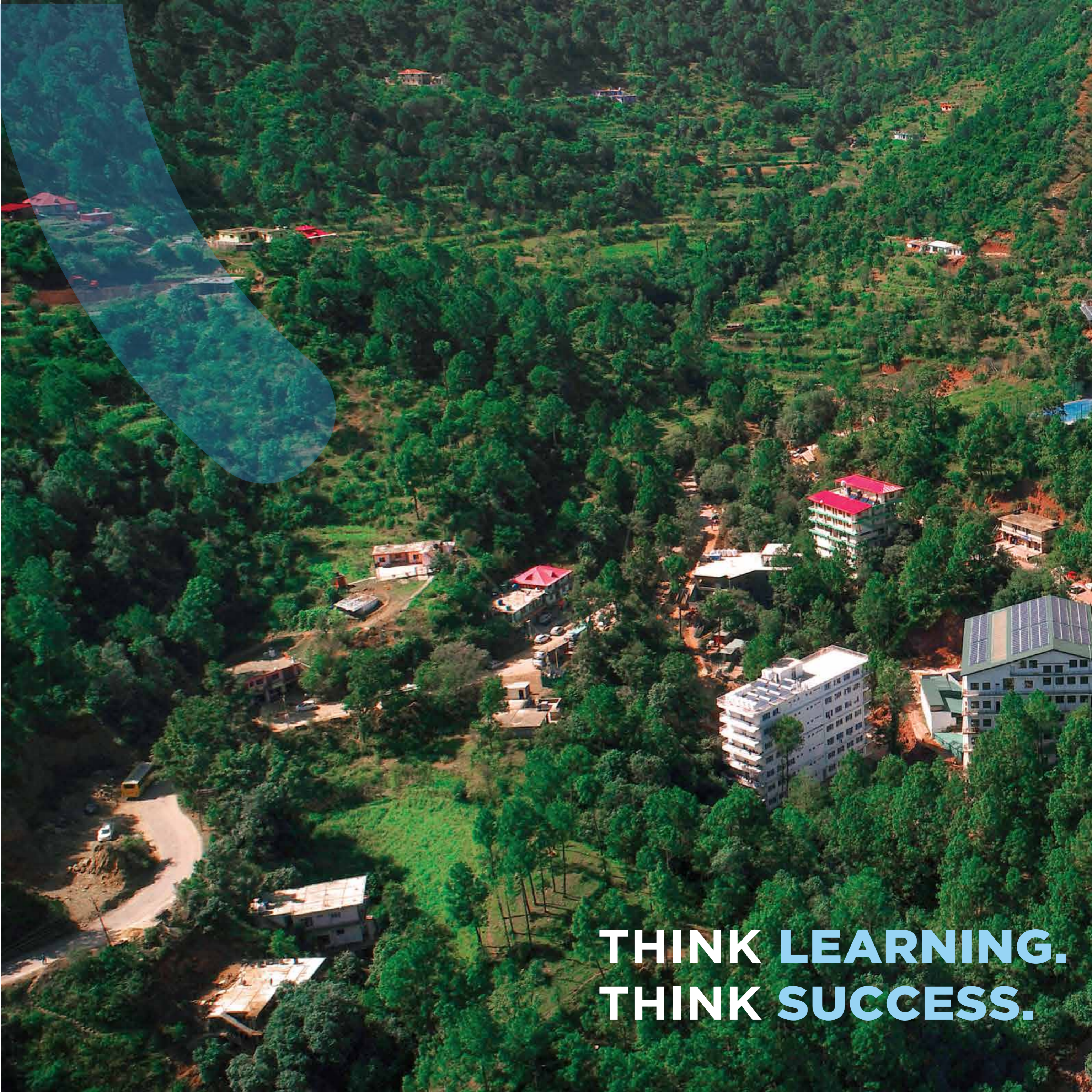


**PROSPECTUS 2023**

**India's No. 1 Private University  
& Top 400 globally**







**THINK LEARNING.  
THINK SUCCESS.**











# CONTENTS

•	Message from our Founders	7-10
•	Introduction: Shoolini University	11-12
•	Faculty of Applied Sciences & Biotechnology	13-20
•	Faculty of Engineering and Technology	21-32
•	Faculty of Management Sciences	33-38
•	Faculty of Liberal Arts & Ancient Wisdom	39-44
•	Faculty of Legal Sciences	45-48
•	Faculty of Pharmaceutical Sciences	49-53
•	Faculty of Science	54-59
•	Faculty of Agriculture	60-63
•	Other Information	64-70

## **Welcome to a University Synonymous with Excellence**

Dear Students and Parents

I'm delighted to announce that Shoolini university has made significant strides in improving its national and global rankings. It has been ranked among the top 200 global universities in the Times Higher Education (THE) Impact Rankings 2022, fulfilling a 10-year-old vision.

Furthermore, the university has achieved the remarkable feat of being ranked second globally in the Sustainable Development Goals category for affordable and clean energy, as well as sixth in the clean water and sanitation category. Additionally, in the National Institutional Ranking Framework (NIRF) Rankings, Shoolini has advanced from the 96th position to the 73rd position.

Our university has attained an impressive h-index of 102, which not only makes us the highest-ranking institution in northern India but also places us second in the country among institutions established after 2008. Notably, seven of our researchers are included in Stanford University's prestigious list of Top 2% scientists worldwide. Shoolini University also stands as the leading patent filer in the country, with over 1200 filed patents. Recognizing our dedication to cutting-edge research and our high h-index, the Department of Science and Technology, Government of India, has selected our university for a grant of Rupees 9.0 crores under the Promotion of University Research and Scientific Excellence (PURSE) project.

In alignment with our commitment to meeting the evolving needs of the modern era, we have introduced a range of online and distance education programmes. To start with, we have launched online courses, such as MBA, BBA, BAJMC and MA in English Literature.

We firmly believe that a great university drives cutting-edge knowledge and innovation while simultaneously working towards the social and economic upliftment of the community. It is this belief, along with our internationally qualified faculty, our focus on student careers and placements, our ongoing innovations in pedagogy and our highly motivated students, that places Shoolini University as a progressive and dynamic institution in the global knowledge economy.

The University has developed more than 140 meaningful international partnerships with esteemed institutions such as the University of Melbourne, University of British Columbia, Western Sydney University, Seoul National University, University of Ulster, Chung Yuan Christian University, Lanzhou University, Arkansas University, to name a few. We pride ourselves in nurturing the creative potential of each student and providing them high-quality educational opportunities, knowing that they hold the key to India's greatness. It is my pleasure to invite you to be a part of Shoolini University and help build an institution all of us are proud to be associated with. Please do not hesitate to reach out to me for any questions or queries.

I look forward to hearing from you.

**Prof Prem Kumar Khosla**  
**Founder & Chancellor**



## **Prof Prem Kumar Khosla**

**An internationally renowned academician, with post doctorate in genetics from Oxford University, UK.**

**Prof Khosla has added new dimensions to higher education and research in Indian Universities. He has served as Vice-Chancellor, HPAU, Palampur (HP) and Shoolini University, Solan. As Senior Scientific Advisor to the Government of Himachal Pradesh, he has been responsible for guiding its biotechnology policy.**





# MESSAGE FROM THE PRO CHANCELLOR

## Dear Students,

I welcome you to a journey of innovation and learning that is bound to transform your life. Shoolini University was seeded with a vision to create a modern learning and innovation village nestled in the Himalayas. Over the past decade, as we built this beautiful ecosystem, each day in the campus has inspired the entire Shoolini community to think and deliver beyond the obvious.

As I speak, we at Shoolini have achieved recognitions at national as well as international platforms. I am happy to share that as you become a member of the Shoolini community, you are joining a campus that is already amongst the Top 300 in Asia and the Top 20 in India.

I recall our student Vivek Soni, a young boy who joined Shoolini about 7 years back for his master's programme. He belonged to a small village in Himachal and spent 2 years working on his idea at Shoolini. With that, he received the opportunity to join a fully-paid scholarship to one of the leading universities in South Korea. In 2019, while I was visiting Seoul, I received a call from him. He mentioned to me that he has launched a startup in Seoul that is funded by a leading funding agency there.

Stories like these are the reason we built Shoolini.

Life at Shoolini is very different. While you are here, you get to work with the local communities, solve real-world problems and challenges, experience adrenalin while you trek the peaks surrounding this beautiful campus, or just pick up your camera and start clicking the many moods of the day at Shoolini. We host multiple clubs and peer learning platforms to enable the full potential of your life.

My advice to you friends is to really challenge yourselves each day when you are a part of this exciting community. I welcome you to Shoolini University.

**Vishal Anand**  
**Founder & Pro Chancellor**



## **Vishal Anand**

**Life at Shoolini is very different. While you are here, you get to work with the local communities, solve real-world problems and challenges, experience adrenalin while you trek the peaks surrounding this beautiful campus, or just pick up your camera and start clicking the many moods of the day at Shoolini.**





# ABOUT VICE CHANCELLOR

Prof. Atul Khosla is the Founder and Vice Chancellor of Shoolini University. He is a B Tech from the IIT Kanpur and MBA from Jamnalal Bajaj Institute of Management Sciences, Mumbai.

A diehard socialist, Prof. Atul is on a mission to change lives. He brings out-of-the-box thinking to the field of education. He drives new initiatives at Shoolini—starting innovative academic programmes, incorporating new methodologies of pedagogy, and building cutting-edge education technology platforms. He has cut his professional teeth at McKinsey and Oliver Wyman. His strong values, substantial experience and sheer energy have taken Shoolini from strength to strength. He is truly invested in the future of young India.

Prof. Atul has been an entrepreneur for more than 15 years – he has founded and led multiple new initiatives. In addition, he has advised several Indian and global organisations on issues of strategy, operations and innovation – he is/ has been Independent Director with Gabriel India, Director with Innohive (a social incubator), Senior Advisor to Ankur Capital (India’s leading social VC fund), advisor to SEBI Chairman (India’s Security Regulator), and advisor to Global management of Swiss Re, among others.

A full-time academician, apart from managing the operations of the University, Prof. Atul teaches Finance and Strategy and is a guest faculty at several Indian and Global Universities.









# Shoolini, among India's top private universities

Shoolini University is a leader in the field of academics and has made giant strides towards delivering quality education and research, and figures among Top 10 private universities in the country as per QS ASIA 2021 Rankings.

We are a non-profit multi-disciplinary private university, and we aspire to provide quality and relevant education to our students at an affordable and subsidized fee structure. To achieve this aspiration, we have designed our business model around five areas of focus: attracting and retaining top national & international faculty; forging alliances with industry & academia of repute; governing through values & transparency; building world class & environment friendly infrastructure; and attracting brilliant & needy students.

Nationally and internationally renowned academicians form the faculty at Shoolini University; one & a half dozen are post-docs and 65 PhDs who are involved in guiding innovative research to over 200 PhD scholars in a vibrant research environment.

The University has attracted more than Rupees 200 million as research grants on biotech related projects, which are funded by various national organizations. Shoolini has strategic academic alliances with leaders such as Genpact and several universities across the globe.



**Faculty of  
Applied Sciences  
& Biotechnology**





## Prof Saurabh Kulshreshtha

PhD, Post-Doc,  
Dept of Pathology, University of Kentucky,  
USA & Max-Planck Institute for Plant  
Breeding Research, Germany  
Dean

Prof Saurabh is an expert in plant-microbe interactions, having conducted postdoctoral research at the University of Kentucky in the United States and the Max - Planck Institute for Plant Breeding Research in Köln, Germany. Under the Himalayan Biodiversity Mission Project, his research group is creating mycovirus-based biocontrol formulation to tackle fungal pathogens of Himalayan fruit and vegetable crops. The group is also investigating the miraculous moringa tree's water purifying capabilities and nutritional benefits, as well as producing wound healing compositions using this plant. Prof Saurabh collaborated with HENKEL Germany on the development of a Moringa-based solution for the treatment of Solan wastewater. His team's water purification kit has won various national and international accolades, including the renowned DST- Lockheed Martin-Tata Trusts award.

Prof Saurabh began his research carrier at CSIR-Institute of Himalayan Bioresource Technology in Palampur. He has over three dozen research papers published in high-impact journals and over two dozen patents filed, several of which have been granted.



## Faculty of Applied Sciences & Biotechnology

Considered among the best in the country in the BioSpectrum rankings, the Faculty of Applied Sciences and Biotechnology research focuses on bio-molecular engineering, drug discovery for cancer, and microbial infections host-pathogen interaction, biodiversity and omics of extremophiles cloning and molecular characterization of industrially important proteins and enzymes, bio-fertilizers and bio-pesticides.

The Faculty of Applied Sciences Biotechnology enjoys excellent reputation for well qualified and learned faculty which include a dozen post docs trained from various institutions in USA and Europe. The Biotechnology Corporate Resource Centre acts as an interface between the students, teachers, and the corporate world for continuous interaction with the industry, sharing the industry experiences, understanding industry needs and providing the required support to the corporate world. The corporate partners include Biocon Ltd, Nestle, Pepsico, Abbott, Sentis Pharma, Dabur Ltd, Jubilant Organosys Ltd, Ocimum Bio-solutions and Nectar Life-Sciences Ltd.

The Faculty has also academic alliances for exchange of students with Seoul National University, South Korea, Ulster University, Northern Ireland, University of Arkansas, USA, University of Naples, Italy, Lanzhou University, China, Sierra Bio Life, Australia, Chung Yuan Christian University, Taiwan and Transgenic Life Sciences & National Bureau of Fish Genetic Resources for collaborative biotech research and Upkar Pharmaceuticals, Tirupati Medicare and NutraHelix for strengthening programmes in Food Technology. It has formed mutually beneficial links with various industries for commercialising research leads of the university and students' projects and training.

Himachal's first commercial food testing laboratory has been set up with a financial outlay of Rs. 2.85 crore funded by Ministry of Food Processing Industries (MOFPI), Government of India. The faculty has also received a DST FIST grant of Rs. 65 lakh for setting up a proteomics facility at the university. The DST along with HPPIC, SCSTE (Shimla) also sponsored an IPR cell at the University.

In addition, the university has also received a financial assistance of Rs. 73.71 lakh under the Human Resource Development Scheme for creation of Infrastructure Development facilities for B Tech & M Tech Food technology courses by the MOFPI. The project includes financial assistance for the purchase of 26 major machines and equipment related to food processing, canning line and dairy processing line. The financial grant also includes an assistance of Rs. 5 lakh for the purchase of more than 500 book titles in the subject of food technology. The university is also looking forward to producing marketable food, vegetable and dairy based products tailored by the food processing units at a pilot scale.

Further to satisfy the requirements of the biotech industry, our graduates are imparted practical training in plant tissue culture, biotransformation, fermentation, Molecular biology, ROT, industrial microbes screening and production, biochemical analysis and standardization of analytical instruments. Graduate and post-graduate students are required to undertake research/ projects.

### **Summit Research Programme - A reimagined B Tech Biotechnology degree programme**

Shoolini has taken the lead to develop a unique research oriented degree programme that prepares students for global opportunities at leading academic institutions and corporate R&D teams. Fully integrated with regular engineering curriculum, the Summit Research programme provides hands-on exposure to high quality research, experience with writing technical papers, personal mentorship and interactions with internationally acclaimed research practitioners and experts.

- Work with faculty and PhD students on live cutting-edge research
- Option to study and conduct lab work in premier universities abroad
- Get individually mentored by academicians and practitioners
- Need-Blind Admission policy



## Current Areas of Research

- Anticancer and Immunomodulation Drugs
- Antimicrobials and Nano-Particle Based Drugs
- Bio-fertilizers and Pest Biocontrol
- Bioremediation and Crop Improvement
- Conservation of Himalayan Biodiversity
- Desiccation and Salinity Tolerance in Crops
- Etiology of Human Diseases
- Genetic Diagnostics of Pathogens
- Genomics, Proteomics, and Enzyme Mining
- Low Cost Food Processing Engineering
- Nutraceuticals
- Plant Host-Pathogen Interaction
- Probiotics
- Biosensor Technology

## School of Biotechnology

### Faculty Members

#### Professor of Eminence/Adjunct Faculty

##### Prof DR Sharma

PhD, Former Head, Biotech Dept& Director (Res), UHF, Solan;  
Professor of Eminence

##### Prof Steven L Stephenson

PhD; Fulbright specialist, University of Arkansas, USA;  
Adjunct Professor

##### Dr Manoj K Kashyap

PhD; Adjunct Professor

##### Dr Kamlesh Kanwar

PhD; Adjunct Professor

### Professors

##### Prof Saurabh Kulshreshtha

PhD, Post-Doc, Dept of Pathology, University of Kentucky,  
USA & Germany

##### Dr Azhar Khan

PhD, Post Doc (USA)

### Assistant Professors/ Lecturers

Dr Nitika Thakur PhD, NET

Dr Pradeep Kumar PhD

Dr Debajyoti Bose, PhD

Dr Gaurav Saxena, PhD

Dr. Jyoti Mehta, PhD

Dr Lokender Kumar, PhD, Post Doc

Dr Rohit Sharma, PhD, Post Doc

Dr Vihang Vivek Ghilasi, PhD

Dr Chandresh Kumari, PhD

Dr Swati, PhD

Dr Vishal Sharma, PhD

Dr Kamika Thakur, PhD

## Academic Programmes

- BSc (Hons) Biotechnology
- BSc (Hons) Microbiology
- MSc Biotechnology
- MSc Microbiology
- M Tech Biotechnology
- PhD Biotechnology
- PhD Microbiology
- PhD Cancer Biology
- PhD Genetics Engineering
- PhD Genetics

## Academic Programmes – Eligibility & duration

### BSc (Hons) Biotechnology

Eligibility: 10+2 in PCM/PCB with minimum 55% marks

Duration: 8 semesters

### BSc (Hons) Microbiology

Eligibility: 10+2 in PCM/PCB with minimum 55% marks

Duration: 8 semesters

### MSc Biotechnology

Eligibility: BSc/ B Tech with Biotechnology/ Microbiology/ Biochemistry/ Life or Physical Sciences as one of the subjects or a bachelor's degree in any branch of science & technology with minimum 60% marks

Duration: 6 semesters



### **MSc Microbiology**

Eligibility: BSc with Microbiology/ Biotechnology/ Bio-chemistry/ Life Sciences as one of the subject with minimum 55% marks

Duration: 4 semesters

### **M Tech Biotechnology**

Eligibility: B Tech/ MSc in Biotechnology/ Microbiology/ Biochemistry or any other branch of Life Sciences with minimum of 50% marks

Duration: 4 semesters

### **PhD Biotechnology**

Eligibility: Two year masters degree in Bio-engineering/Life Sciences/ Physical Sciences/ related discipline with minimum of 55% marks OR 4-year Bachelor's degree with Research in related discipline with minimum CGPA of 7.5/10 or 75% marks

Duration: 6 semesters

### **PhD Microbiology**

Eligibility: Two year masters degree in Bio-engineering/ Life Sciences/ Physical Sciences/ Microbiology/ related discipline with minimum of 55% marks OR 4-year Bachelor's degree with Research in related discipline with minimum CGPA of 7.5/10 or 75% marks

Duration: 6 semesters

### **PhD Cancer Biology**

Eligibility: Two years master's degree in Bio-engineering/Life Sciences/ Physical Sciences/ related discipline with minimum of 55% marks OR

4-year Bachelor's degree with Research in related discipline with minimum CGPA of 7.5/10 or 75% marks

Duration: 6 semesters

### **PhD Genetics Engineering**

Eligibility: Two years master's degree in Science/ Technology/ related discipline with minimum 55% marks OR 4-year Bachelor's degree with Research in related discipline with minimum CGPA of 7.5/10 or 75% marks

Duration: 6 semesters

### **PhD Genetics**

Eligibility: Two years master's degree in Science/ Technology/ related discipline with minimum 55% marks OR 4-year Bachelor's degree with Research in related discipline with minimum CGPA of 7.5/10 or 75% marks

Duration: 6 semesters



## **Basis of Admissions:**

Merit of the qualifying examination or otherwise specified entrance exams for the following programmes:

- B. Tech: Through NEET/JEE/ HPCET or any equivalent entrance test recognized by HP Government. Vacant seats, after exhausting the merit list of JEE/HPCET, are to be filled based on merit of 10+2.
- PhD: Through Shoolini University Entrance Test followed by personal interview. JRF/NET/SET/M Phil qualified candidates are exempted from entrance test.



## School of Bioengineering & Food Technology

### Faculty Members

#### Professor of Eminence/Adjunct & Visiting Faculty

Prof Umesh Kumar Kohli, PhD; Post-Doc, (Washington State University, USA); Professor of Eminence

Dr Ramesh C. Chandan PhD; Adjunct Professor

Dr VK Joshi PhD; Adjunct Professor

Dr CK Shirkot PhD; Adjunct Professor

Dr BB Lal Kaushal PhD; Visiting Professor

### Professors

#### Dr Dinesh Kumar

PhD, PG Diploma in Bio-informatics, GATE, PGDCA, Post Doc experience in Ireland & Netherlands

#### Dr Somesh Sharma

PhD NET

#### Dr PK Chauhan

PhD NET

### Associate Professors

Dr Rupak Nagraik, PhD

### Assistant Professors/ Lecturers

Dr Chavan Praful Devrao, PhD

Dr Vandana, PhD

Dr Avinash, PhD

Dr Poonam, PhD

Dr Rekha, PhD

Ms Diksha Kumari Sharma, MSc, PhD (Pursuing),  
Asst Professor cum TA

Ms Srishti Mathur, M Sc, PhD (Pursuing)

Ms Tanbeer Kaur, M Sc, PhD (Pursuing)

### Academic Programmes

- BSc (Hons) Food Technology
- BSc Nutrition and Dietetics
- B Tech Biotechnology Research
- B Tech Biotechnology (Lateral Entry)
- B Tech Food Technology Research
- B Tech Food Technology (Lateral Entry)
- M Tech Food Technology
- MSc Food Technology
- MSc Nutrition and Dietetics
- PhD Food Technology

### Academic Programmes – Eligibility & duration

#### BSc (Hons) Food Technology

Eligibility: 10+2 in PCM/PCB with minimum 55% marks

Duration: 8 semesters

#### BSc Nutrition and Dietetics

Eligibility: 10 +2 PCB with minimum 55% marks

Duration: 6 semesters





### **B Tech Biotechnology Research (4 years)**

Eligibility: 10+2 with any of the three following subjects – physics /mathematics / chemistry / computer science / electronics / information technology / biology / informatics practices / biotechnology / technical vocational subject / agriculture / engineering graphics / business studies / entrepreneurship and minimum 60% marks  
Duration: 8 semesters

### **B Tech Biotechnology (Lateral Entry)**

Eligibility: Passed Minimum THREE years / TWO years (Lateral Entry) Diploma examination with at least 60% marks in ANY branch of Engineering and Technology OR Passed B.Sc. Degree with at least 60% marks.  
Duration: 6 semesters

### **B Tech Food Technology Research (4 years)**

Eligibility: 10+2 with any of the three following subjects – physics /mathematics / chemistry / computer science / electronics / information technology / biology / informatics practices / biotechnology / technical vocational subject / agriculture / engineering graphics / business studies / entrepreneurship and minimum 60% marks  
Duration: 8 semesters

### **B Tech Food Technology (Lateral Entry)**

Eligibility: Passed Minimum THREE years / TWO years (Lateral Entry) Diploma examination with at least 60% marks in ANY branch of Engineering and Technology OR Passed B.Sc. Degree with at least 60% marks.  
Duration: 6 semesters

### **M Tech Food Technology**

Eligibility: B. Tech/ MSc in Food Technology/ Agriculture/ Biotechnology or any other branch of Life Sciences with minimum of 50% marks  
Duration: 4 semesters

### **MSc Food Technology**

Eligibility: BSc in any stream with minimum of 55% marks,  
Duration: 4 semester

### **MSc Nutrition and Dietetics**

Eligibility: BSc in any stream with minimum 50% marks,  
Duration 4 semesters

### **PhD Food Technology**

Eligibility: Four years graduation degree/ Master's degree in Food Technology/ Life Sciences/ Physical Sciences/ related discipline with minimum 55% marks OR  
4-year Bachelor's degree with Research in related discipline with minimum CGPA of 7.5/10 or 75% marks ,  
Duration 6 semesters





## Basis of Admissions:

Merit of the qualifying examination or otherwise specified entrance exams for the following programmes:

- B. Tech: Through JEE/ HPCET or any equivalent entrance test recognized by HP Government. Vacant seats, after exhausting the merit list of JEE/HPCET, are to be filled based on merit of 10+2.
- M. Tech: Through GATE/HPCET or any other recognized entrance test followed by Personal Interview. Vacant seats, after exhausting the merit list of GATE/HPCET, are to be filled based on merit of B Tech with candidates.
- PhD: Through Shoolini University Entrance Test followed by personal interview. JRF/NET/SET/M Phil qualified candidates are exempted from entrance test.
  
- Reservation of seats for bonafide Himachali/ SC/ ST/ physically handicapped/economically weaker section candidates as per the rules of Himachal Pradesh & Central Government.
- Number of seats for Lateral Entry as per AICTE norms.
- Minimum eligibility marks relaxable for SC/ST/backward classes and others as per the rules of Himachal Pradesh Government.
- Roaster for admissions as per HP Government rules.
- Criteria for admissions to professional courses shall be in accordance with HP government Notification No. EDN (TE) F (10) 2/2018 dated 4th May 2018.





**Faculty of  
Engineering  
& Technology**





# Prof Virender Rihani

Ph D (PU), ME (PEC), & BE (DCE)  
Dean

A doctorate from Panjab University, Chandigarh. Prof. Virender Rihani specializes in the area of artificial intelligence. He started using artificial neural networks in year 1992. He has developed systems for detection of eye diseases, tumours of brain, recognition of printed Bengali, Gurmukhi and Hindi characters, prediction of stock market and many more. He has about 41 years of teaching and research. He has guided about 50 ME/MTech dissertations in the area the area of Processor Design, Pattern Recognition, Robotics, AI etc. He has handled many prestigious consultancies problems both for Government sector as well as Private sector. He has worked in Punjab Engineering College, Chandigarh and in a private university. He has also worked as OSD to Chandigarh Administration for establishing CCET, Chandigarh. He is a fellow of Institution of Engineers (India) and Senior Member of IEEE. He is on panel of experts of DRDO, CSIR and a member of peer team of NBA.



# Faculty of Engineering & Technology

Shoolini University is fast growing into a world class University with focus on high level innovative research with a multidisciplinary approach. With ever increasing demand and expectations from the present-day engineers, we are gearing up to prepare highly trained and skilled engineers and technologists to face the challenges of the fast changing technologically advanced world.

The Faculty of Engineering and Technology at Shoolini University is distinguished as one of the top ranked engineering schools in India committed to excellence in qualitative teaching, robust learning and proactive research with the aim to create highly qualified engineers and technologists with strong research knowledge base who can make a difference in the society with their high impact research and innovative interventions.

The students at undergraduate level undertake innovative research projects which will further evolve them into highly trained world class researchers at Masters and PhD level. The curriculum integrates engineering with science and improves student understanding of technology and will prepare them to adopt multidisciplinary research approach.

Shoolini University's 'Sprint Program' is designed to significantly upgrade soft skills and capabilities of its engineering and technology students. Led by top corporate and industry leaders, leading entrepreneurs and professional trainers, the program involves exhaustive sessions on current affairs in relevant industry domains, soft skills, personal interviews and group discussion based on highly interactive approach. It is an accelerated learning program designed after Stanford's mini MBA.

## Centers of Excellence

Faculty of Engineering & Technology has established following Centre of Excellence to provide wider opportunities to the students:

- **Centre for Automobile Education and Research**

Shoolini University has established the Centre of Excellence for Automobile Engineering by joining hands with leading industries in Automotive Engineering to achieve excellence and to produce entrepreneurs and technocrats. It is the first such Centre in the region providing academic excellence in Automob

ile Engineering at undergraduate, master's and doctoral level, along with imparting training to upgrade skills required by the industry.

- **Centre of Excellence in Renewable Energy Technology**

This Centre aims for promoting research in energy efficiency and the adoption of renewable energy sources like solar, wind, geothermal, small hydro, biomass, etc. to meet energy requirements by considering implementation of renewable energy policies at local, regional, and national levels. It will further explore current, new and alternate energy technologies including hybrid of renewable, conventional sources and fossil fuels to develop innovative technologies. The main research programme highlights of the Centre are focused on:

- Wind, solar & other renewable energy resource assessment in the Himalayan region.
- Solar power generation; solar roof top power plants. Energy & Environment Policy concerns.
- Solar thermal; Concentrated solar development & applications.
- Energy storage; Renewable based hybrid energy Systems
- Passive solar heating and cooling technologies; Green buildings; Energy conservation efficiency in industry & buildings.
- Energy Security: Lesser dependence on oil imports through development and deployment of alternate fuels (hydrogen, biofuels and synthetic fuels) and the applications to contribute by bridging the gap between domestic oil supply and demand.
- Increase in the share of clean power: Renewable (Bio, wind, hydro, solar, geothermal & tidal) electricity to supplement fossil fuel-based electricity generation.
- Energy Availability and Access: Supplement energy needs for cooking, heating, power generation in rural, urban, industrial and commercial sectors.
- Energy Affordability: Cost-competitive, convenient, safe.
- Energy Equity: Per-capita energy consumption at par with the global average level by 2050, through a sustainable and diverse fuel- mix.



- **Centre for Excellence in Visionary Learning Community of India (VLCI)**

This Centre has been established by Padam Shri Professor Shoji Shiba in collaboration with Japan International Cooperation Agency (JICA) and Confederation of Indian Industries (CII). The aim of the program is to create great visionaries/leaders to upgrade the standard of Indian manufacturing sector and to create industry ready students.

- **Remote Centre for “AAKASH for Education”, IIT Bombay**

This remote Centre is running in the school of electrical and computer science engineering. The Centre has excellent infrastructure and good faculty with expertise and experience

- **Amazon Web Services (AWS) Academy**

This academy provides training and certification model designed to validate the knowledge of professionals as per the growing and changing demands of the IT industry. To keep up with the standards, one can take the certification and expect a great rise in terms of position and pay scale of course.

## **International Students and Faculty Exchange**

As a part of international tie-ups with various organizations, Shoolini University has in place an exchange programme for students and faculty to pursue studies and undertake research at respective foreign Institutions. Under the student exchange programme, more than 200 students have gone for studies and research in various reputed universities/ institutions in South Korea, Taiwan, China, Italy, South Africa, Australia, and USA. In South Korean universities, they have been awarded fellowships to meet their boarding, lodging and tuition fee expenses worth Rs.5 Lakh/semester. As many as forty students have also availed higher studies opportunity in different foreign Universities with scholarship worth Rs. 10-12 lakh/year. From outside India, twenty students from South Korean, China, Turkey, Afghanistan, Ethiopia and Taiwanese are studying at Shoolini University.

On the faculty exchange front, Dr Hyoungh-In-Lee, Research Professor from Seoul National University and On Cham Lee taught Shoolini B Tech students for a fortnight. A number of foreign teachers are currently teaching at campus. The university has a regular foreign faculty teaching German and Chinese languages at the campus.





## Facilities

Mechanical Engineering Workshop/ Well-equipped Mechanical and Civil Engineering labs/ Physics & Chemistry Labs/ Computer Labs with broadband connectivity OptiPlex Dell high end machines/ Electrical Engineering Labs/ Electronics & Communication Labs/ Computer Science & Engineering Lab/ CAD/CAM Lab/ Tinkering Lab/ Seminar Halls/ Tutorial Rooms

## Current areas of research

- Big Data
- Image Processing
- Cloud Computing
- Wireless Sensor & Networks
- Cryptography & Network Security
- Transparent Conducting Oxide Films
- Integrated Micro/ Nano Photonics
- Robotics and Automation
- MEMS and NEMS
- Mechatronics
- Nanotechnology
- Heat Transfer
- Material Science
- Hydro Turbines
- Manufacturing Technology
- Renewable Energy (solar, wind, biomass, etc.)
- Mechanical Design
- Automobile Engineering
- Civil Engineering (earthquake, transport, building material, green building passive solar design & engineering)

## School of Core Engineering

### Faculty members

#### Professors of Eminence/ Adjunct & Visiting Faculty

**Dr JP Soni**, PhD, Post-doc; Professor of Eminence; Civil

**Dr Subhash Chander**, PhD, Post-doc; Professor of Eminence; Mechanical

**Er CP Mahajan**, Professor of Eminence; EEE

**Dr GS Virdi**, PhD. Post Doc; Professor of Eminence; EEE

**Dr SR Prabhakar**, PhD (Metallurgical Engg.); Professor of Eminence; Mechanical

**Dr Rajinder Abhange**, B Tech; Visiting Faculty

**Er S Acharya**, B Tech, MBA; Visiting Faculty

**Mr Pravesh Srivastava**, B Tech, MBA; Visiting Faculty

**Maj Gen AK Chaturvedi (Retd)**, M Tech, M Phil, PhD; Visiting Faculty

**Dr HyoungIn Lee**, PhD; Seoul National University; Visiting Faculty

**Dr Harish Chandan**, PhD; Adjunct Professor

### Professors

**Prof Virender Rihani**, M Tech, PhD

**Prof Mohindra Singh Thakur**, PhD; Civil

**Dr SS Chandel**, PhD; Energy

**Prof Bhaskar Goel**, M Tech, PhD; Mechanical

**Dr Ram Prakash Dwivedi**, PhD, Post Doc; Information & Communication Engg

**Dr Amar Raj Singh**, PhD; Mechanical

### Associate Professors

**Dr Robin Thakur**, PhD; Mechanical

**Dr Raj Kumar**, PhD; Mechanical

**Dr Raj Kumar Saini**, PhD; Electrical Power Systems

### Assistant Professors/ Lecturers

**Dr Ashwani Sharma**, PhD; ECE

**Er Sushil Kumar**, M Tech; PhD (Pursuing); Mechanical

**Er Sorabh Aggarwal**, M Tech; PhD (Pursuing); Mechanical

**Dr Nitin Kumar Sharma**, M Tech, PhD; Mechanical

**Dr Arunava Poddar**, PhD; Water Resources Engg

**Dr Navsal Kumar**, PhD

**Dr Diksha Chauhan**, PhD

**Dr Rahul Chandel**, PhD; Centre of Energy

**Dr Bhupinder Kumar**, PhD; Civil

**Er Veena Kashyap**, B Tech; M Tech; PhD (Pursuing); Civil

**Dr Nitisha Sharma**, M Tech, PhD (Pursuing); Civil

**Ms Amita Verma**, M Tech; Sr Lecturer

**Er Pankaj Kapoor**, M Tech. PhD (Pursuing)



### **Academic programmes**

- B Tech Mechanical Engineering (Robotics & AI)
- B Tech Civil Engineering
- B Tech Civil Engineering (Lateral Entry)
- B Tech Renewable Energy & Sustainability
- B Tech ECE
- B Tech ECE Lateral Entry
- M Tech Civil Engineering
- M Tech ECE
- PhD Mechanical Engineering
- PhD Civil Engineering
- PhD Energy
- PhD ECE



## **Academic Programmes – Eligibility & duration**

### **B Tech Mechanical Engineering (Robotics & AI)**

Eligibility : 10+2 with any of the three following subjects – physics / mathematics / chemistry / computer science / electronics / information technology / biology / informatics practices / biotechnology / technical vocational subject / agriculture / engineering graphics / business studies / entrepreneurship and minimum 60% marks

Duration: 8 semesters

### **B. Tech Civil Engineering**

Eligibility :10+2 with any of the three following subjects – physics / mathematics / chemistry / computer science / electronics / information technology / biology / informatics practices / biotechnology / technical vocational subject / agriculture / engineering graphics / business studies / entrepreneurship and minimum 60% marks

Duration: 8 semesters

### **B Tech Civil Engineering**

#### **Lateral Entry**

Eligibility :Passed Minimum THREE years / TWO years (Lateral Entry) Diploma examination with at least 60% marks in ANY branch of Engineering and Technology OR Passed B.Sc. Degree with at least 60% marks and passed 10+2 examination with Mathematics as a subject.

Duration: 6 semesters



### **B Tech Renewable Energy & Sustainability**

Eligibility : 10+2 with any of the three following subjects – physics /mathematics / chemistry / computer science / electronics / information technology / biology / informatics practices / biotechnology / technical vocational subject / agriculture / engineering graphics / business studies / entrepreneurship and minimum 60% marks

Duration: 8 semesters

### **B Tech ECE**

Eligibility : 10+2 with any of the three following subjects – physics /mathematics / chemistry / computer science / electronics / information technology / biology / informatics practices / biotechnology / technical vocational subject / agriculture / engineering graphics / business studies / entrepreneurship and minimum 60% marks

Duration: 8 semesters

### **B Tech ECE Lateral Entry**

Eligibility :Passed Minimum THREE years / TWO years (Lateral Entry) Diploma examination with at least 60% marks in ANY branch of Engineering and Technology OR Passed B.Sc.

Degree with at least 60% marks and passed 10+2 examination with Mathematics as a subject.

Duration: 6 semesters

### **M Tech Civil Engineering**

Eligibility : B Tech/ BE Civil Engineering or related B Tech/ MSc degree with minimum 50% marks

Duration: 4 semesters

### **M Tech ECE**

Eligibility : B Tech ECE or related subjects or MSc in related subjects with minimum 50%

Duration: 4 semesters

### **PhD Mechanical**

Eligibility :Two year masters degree in Technology/ Engineering/ related discipline with minimum 55% marks OR 4-year Bachelor's degree with Research in related discipline with minimum CGPA of 7.5/10 or 75% marks

Duration: 6 semesters

### **PhD Civil**

Eligibility : Two year masters degree in Technology/ Engineering/ related discipline with minimum 55% marks OR

4-year Bachelor's degree with Research in related discipline with minimum CGPA of 7.5/10 or 75% marks

Duration 6 semesters

### **PhD ECE**

Eligibility : Two year masters degree in Technology/ Engineering/ related discipline with minimum 55% marks OR

- 4-year Bachelor's degree with Research in related discipline with minimum CGPA of 7.5/10 or 75% marks

Duration 6 semesters

### **PhD Energy**

Eligibility : Two year masters degree in Technology/ Engineering/ related discipline with minimum 55% marks OR

4-year Bachelor's degree with Research in related discipline with minimum CGPA of 7.5/10 or 75% marks

Duration 6 semesters

## **Basis of Admissions:**

Merit of the qualifying examination or otherwise specified entrance exams for the following programmes:

- B Tech: NEET/JEE/ SAT or Shoolini University's multiple choice entrance test.
- M Tech: Shoolini University's multiple choice entrance test, and faculty interaction
- PhD: Shoolini University's multiple choice entrance test, and assessment of research aptitude through concept note & faculty interaction



# Yogananda School of AI, Computer & Data Sciences

## Faculty Members

### Professors

Prof Ashish Khosla, BE (PEC), PGDBM (IIM Calcutta);  
President and Chief Innovation and Marketing Officer  
Dr Pankaj Vaidya, ME, BE; CSE

### Associate Professors

Dr Neeraj Gandotra, M Tech, PhD; Maths  
Dr Gaurav Gupta, M Tech, PhD; CSE  
Dr Ravikant, PhD; CSE  
Mr Rohit Khosla, MBA; HRM; Associate Director

### Assistant Professors

Dr Namita Gandotra, M Tech, PhD; CSE  
Er Sunil Kumar, M Phil, M Tech, M Sc; Maths  
Er Brijbushan, M Tech, PhD (Pursuing);  
Er Puneet Kapoor, ME  
Dr Prachi Agrawal, MSc, PhD  
Mr Anurag Rana, M Tech; PhD Pursuing  
Ms Bharti Thakur, M Tech, PhD (Pursuing); Computer  
Dr Subhra Mishra, PhD  
Er Priyanka, PhD (Pursuing)  
Er Laxman Singh, M Tech  
Er Arvind Sharma, PhD (Pursuing)  
Er Anandita Garg, M Tech

## Academic Programmers

- B Tech AI (Artificial Intelligence)
- B Tech CSE
- B Tech CSE Artificial Intelligence
- B Tech CSE Cyber Security
- B Tech CSE Data Science
- B Tech Computer Science & Engineering (Lateral Entry)
- B Tech CSE Cloud Computing
- B Tech CSE DevOps
- B Tech CSE Gaming Design AR/ VR
- B Tech CSE UI/ UX
- B Tech CSE Graphics & Animation
- B Tech Bioinformatics
- BCA
- BCA Artificial Intelligence & Machine Learning
- BCA Gaming and Graphics
- BCA Full Stack Developer
- BCA UI/UX

- MCA 2 years
- BA/ B Sc (Hons) Mathematics
- BBA Computer Science & Entrepreneurship (4 years)
- M Tech Computer Science & Engineering
- MA/M Sc Mathematics
- PhD Computer Science & Engineering
- PhD Big Data
- PhD Data Science
- PhD AI, Cloud Computing Tech, Cyber Security, Data Analytics
- PhD Mathematics





## Academic Programmes – Eligibility & duration

### **B Tech AI (Artificial Intelligence)**

Eligibility: 10+2 with any of the three following subjects — physics /mathematics / chemistry / computer science / electronics / information technology / biology / informatics practices / biotechnology / technical vocational subject / agriculture / engineering graphics / business studies / entrepreneurship and minimum 60% marks

Duration: 8 semesters

### **B Tech CSE**

Eligibility: 10+2 with any of the three following subjects — physics /mathematics / chemistry / computer science / electronics / information technology / biology / informatics practices / biotechnology / technical vocational subject / agriculture / engineering graphics / business studies / entrepreneurship and minimum 60% marks

Duration: 8 semesters

### **BTech CSE Artificial Intelligence Research**

Eligibility: 10+2 with any of the three following subjects — physics /mathematics / chemistry / computer science / electronics / information technology / biology / informatics practices / biotechnology / technical vocational subject / agriculture / engineering graphics / business studies / entrepreneurship and minimum 70% marks

Duration: 8 semesters

### **B Tech CSE Cyber Security**

Eligibility: 10+2 with any of the three following subjects — physics /mathematics / chemistry / computer science / electronics / information technology / biology / informatics practices / biotechnology / technical vocational subject / agriculture / engineering graphics / business studies / entrepreneurship and minimum 60% marks

Duration: 8 semesters

### **BTech CSE Data Science**

Eligibility: 10+2 with any of the three following subjects — physics /mathematics / chemistry / computer science / electronics / information technology / biology / informatics practices / biotechnology / technical vocational subject / agriculture / engineering graphics / business studies / entrepreneurship and minimum 60% marks

Duration: 8 semesters

### **B Tech CSE (LEET)**

Eligibility: Passed Minimum THREE years / TWO years (Lateral Entry) Diploma examination with at least 60% marks in ANY branch of Engineering and Technology OR Passed B.Sc. Degree with at least 60% marks and passed 10+2 examination with Mathematics as a subject.

Duration: 6 Semesters

### **B Tech Bioinformatics**

Eligibility: 10+2 with any of the three following subjects — physics /mathematics / chemistry / computer science / electronics / information technology / biology / informatics practices / biotechnology / technical vocational subject / agriculture / engineering graphics / business studies / entrepreneurship and minimum 60% marks

Duration: 8 semesters

### **BCA**

Eligibility: (Specialisation in UI/UX, Full-stack Developer)  
Eligibility: 10+2 Any Stream with minimum marks 55%.

Duration: 6 Semester

### **BCA Artificial Intelligence & Machine Learning**

#### **BCA Gaming & Graphics**

#### **BCA Full Stack Developer**

#### **BCA UI/UX**

Eligibility: 10+2 (in any stream) with minimum 55% marks

Duration: 6 semesters

### **MCA 2 years**

Eligibility: BSc/ BA or BCA degree with Mathematics as one of the subjects at 10+2 level/ graduation with minimum 50% marks

Duration: 4 semesters

### **BA/ BSc (Hons) Mathematics**

Eligibility: 10+2 in any stream with Mathematics as one of the subjects with minimum marks 50%

Duration: 6 semesters



**BBA Computer Science & Entrepreneurship (4 years)**

Eligibility: 10+2 (in any stream) with minimum 55% marks

Duration: 8 semesters

**M Tech Computer Science & Engineering**

Eligibility: B Tech/ BE Computer Science & Engineering or related BTech/ MSc with minimum 50% marks

Duration: 4 semesters

**MA/ MSc Mathematics**

Eligibility: Graduation in any stream with Mathematics as one of the subjects with minimum marks 50%

Duration: 4 semesters

**MSc Data Science**

Eligibility: Graduation degree in Science/ Technology, Engineering, CSE or any other related discipline with minimum 55% marks

Duration: 4 semesters





**PhD CSE**

Eligibility: Two year masters degree in Computer Science/ Engineering / related discipline with minimum of 55% marks OR 4-year Bachelor's degree with Research in related discipline with minimum CGPA of 7.5/10 or 75% marks  
Duration: 6 semesters

**PhD Big Data**

Eligibility: Two year masters degree in Computer Science/ Engineering / related discipline with minimum of 55% marks OR 4-year Bachelor's degree with Research in related discipline with minimum CGPA of 7.5/10 or 75% marks  
Duration: 6 semesters

**PhD Data Science**

Eligibility: Two year masters degree in Computer Science/ Engineering / related discipline with minimum of 55% marks OR 4-year Bachelor's degree with Research in related discipline with minimum CGPA of 7.5/10 or 75% marks  
Duration: 6 semesters

**PhD AI, Cloud Computing Tech, Cyber Security, Data Analytics**

Eligibility: Two year masters degree in Computer Science/ Engineering / related discipline with minimum of 55% marks OR 4-year Bachelor's degree with Research in related discipline with minimum CGPA of 7.5/10 or 75% marks  
Duration: 6 semesters

**PhD Mathematics**

Eligibility: Two year masters degree in Computer Science/ Engineering / related discipline with minimum of 55% marks OR 4-year Bachelor's degree with Research in related discipline with minimum CGPA of 7.5/10 or 75% marks  
Duration: 6 semesters





## Basis of Admissions:

Merit of the qualifying examination or otherwise specified entrance exams for the following programmes:

- B Tech: Through JEE/ HPCET or any equivalent entrance test recognized by HP Government. Vacant seats, after exhausting the merit list of JEE/HPCET, are to be filled based on merit of 10+2.
- M Tech: Through GATE/HPCET or any other recognized entrance test followed by Shoolini University multiple choice entrance test and faculty interaction. Vacant seats, after exhausting the merit list of GATE/HPCET, are to be filled based on merit of B Tech with candidates.
- PhD: Shoolini University's multiple choice entrance test, and assessment of research aptitude through concept note & faculty interaction. GATE qualified candidates are exempt from the written exam.
- Reservation of seats for bonafide Himachali/ SC/ ST/ physically handicapped/economically weaker section candidates as per the rules of Himachal Pradesh & Central Government.
- Number of seats for Lateral Entry as per AICTE norms.
- Minimum eligibility marks relaxable for SC/ST/backward classes and others as per the rules of Himachal Pradesh Government.
- Roaster for admissions as per HP Government rules.
- Criteria for admissions to professional courses shall be in accordance with HP government Notification No. EDN (TE) F (10) 2/2018 dated 4th May 2018.





**Faculty of  
Management  
Sciences**





# Prof Munish Sahrawat

President & Dean  
Faculty of Management Sciences

Prof. Munish is a Business and Academic Leader with 25 years of diverse experience across Financial Services (HSBC, Citibank, ANZ) Higher Education (Ashoka University) and Startups in India, Middle East and Hong Kong, wherein he delivered key results in different customer segments and markets. He held COO roles involving inter-disciplinary responsibilities for Business Transformation, Operations, Human Resources, Project Management, Strategic Planning, Technology, Customer Experience, Finance, Risk and was involved in few bank acquisitions. His stint at Ashoka University saw him work closely with academicians and leading industry leaders in building one of the finest liberal education University in India.



# School of Business Management

The School of Business Management is an esteemed institution, which maintains high levels of academic excellence and innovation in management, provides quality education at an affordable price and constantly seeks ways of adding value to students. It is dedicated to a core expertise in global management education and focuses on excellence in teaching, promoting lifelong-learning and preparing students for the challenges of tomorrow. It is clubbed among top 102-125 management schools in India by National Institutional Ranking Framework (NIRF), Ministry of Human Resource, Government of India for the year 2022.

We envisage building the School of Business Management into a Centre of Excellence for management education to meet the standards and aspirations of the corporate world. We aim at developing leaders by providing adequate interaction with leading subject matter experts and exposure to the industry. Under the guidance and leadership of Prof Rojhe, Dean and ably supported by a team of esteemed and experienced faculty, the Business School is progressing towards its goal to be a top centre of learning and research in Business Administration.

## Focus on Placement

- Active placement & career development cell, which frequently coordinates to give foothold to the students in the industry, higher education and entrepreneurship.
- School of Business Management conducts campus placements for its students. During placement week a large number of MNCs and leading companies visit the campus for on spot placements.
- Top placement for MBA batch with excellent pay packages in reputed companies, such as Genpact, ICICI, Marsh & McLennan, C-Step, Toyota, Airtel, Tata Hitachi, HDFC Bank, Oberoi, Abacus Offshore from Seychelles, Religare India, Infoline and many more.
- Great summer placements for first year MBA students with handsome stipends.

The Shoolini MBA is a **fully residential programme**. It prepares you for a successful management career by building core managerial expertise and personality development. Our road map is to deliver a unique global education to students, executives and global management community through 3Rs: Rigour, Relevance and Reliability.

## Best in class & Quality Education

- Leading professionals as mentors from industry and corporate sector to our students are the hallmark of Shoolini University.
- Educational tours where students get an opportunity to interact with industries and institutes.
- Extensive use of modern teaching methodologies, online interaction with teachers and online lectures.
- Wi-Fi Campus, high speed internet facility, resourceful library, intellectual atmosphere and with audio video aids.
- Emphasis on Knowledge, Skills and Creative Abilities of students through 'Add-on Modules' Industry Module.
- The unique Module for Self-Improvement through meditation and yogic sciences is offered to MBA students for building self-confidence and facing challenges in the corporate world.

## Personality Development Modules

- The Communication Effectiveness Module offers best in class techniques on communication skills for interviews & managerial effectiveness.
- Students' Management Club 'The Invincible' for overall development of students.
- Modules developed by leading professional managers are offered on key industry sectors such as banking and financial services with a view to increase the exposure and employability of management students.



## Current Areas of Research

- Human Resource Management
- Social Gerontology
- Organizational Behaviour
- Networks
- Economic Development
- Agricultural/ Rural Economics
- Consumer Behaviour
- Finance and Banking
- Marketing
- Environment

## Governance Support to MBA Programme

Majority of the members of governing body and other councils of the university are distinguished professionals, business executives and entrepreneurs, who are the source of guidance and inspiration for the execution of business school programmes and placement of students.

### Mr Ramesh K Mehan

BE, MSIE (Kansas State University, USA), MBA (University of Dayton, USA); Managing Director of Five Ohio Based Companies

### Mr Raj Khosla

B Tech (IIT Bombay), MBA; Director Kaefer Insulteo Ltd, Thailand

### Mr Sudhir Shukla

MBA; Former Senior Vice President, Yamaha India

### Mr Ashish Khosla

BE, MBA (IIM Calcutta); Formerly Senior Vice President, UNB, Abu Dhabi; Formerly Senior Executive Positions in Citibank, HSBC, Marico

### Mrs Ashoo Khosla

MBBS (Gold Medalist), MBA (ISB Hyderabad); Formerly Head Marketing MNC Trading, Abu Dhabi

### Mr Vishal Anand

MBA, Microsoft Certified Professional; Managing Partner, Anand Enterprises, Solan

### Mrs Nishtha Anand

BA (Hons) English, MA English, PG Diploma in Journalism; Chief Editor, Penpundit.com and Techthirsty.com

Globally, hospitality and hotel management are growing sectors. According to the World Travel & Tourism Council, India's travel and tourism sector is expected to be the second largest employment provider in the world. Viewing this phenomenal growth, tremendous shortage is projected in technically skilled professionals at all levels both in Indian and global hospitality sector. Our three years B Sc degree in Hospitality and Hotel Administration with a focus to give students key competencies related to hospitality business, communications and human relations that will allow them to work in different service sectors around the world.

## Facilities

IT Centre/ e-Lab/ Language Lab/ Audio-Visual Room/ Mediation Hall/ Tutorial Rooms/ Conference Rooms/ Yoga and Meditation Centre/ Hotel Chalet/ Restaurant/ Bakery/ Shoolini Radio/ Seminar Halls/ Video-conferencing/ Online Lectures.

## Faculty Members

### Professors/Directors

**Prof Atul Khosla**, B Tech (IIT Kanpur), MBA (Jamna Lal Bajaj), Senior Partner & Country Head Oliver Wyman, Previous Senior Management Positions: a-connect Switzerland, McKinsey & Company India, Everest Group USA; Professor; Vice Chancellor and Executive Trustee

**Prof Amit Ray**, PhD; Distinguished Professor, School of Design  
**Col TPS Gill**, MA (Pub Admin), M Sc (Defence Studies), Director YKC

**Prof Munish Sahrawat**, MBA, Dean, Management Sciences

**Prof Narinder Verma**, PGDM (IIMC), PGDAC, B Tech (IIT); Management Sciences

**Mr Pratip Mazumdar**, Director, Hospitality & Hotel Management

**Dr (Ms) Kesari Singh**, PhD, NET; Economics

**Mr Sanjeev Singh**, Director - HR

**Mr Vivek Atray**, Electronics Engineering (IAS); Management Sciences

**Mr BK Kaul**, Professor of Practice (MDP)



## Associate Professors

**Ms Ashoo Khosla**, PGDBM; Management Sciences  
**Ms Avnee Gupta**, MBA; Finance  
**Dr Pooja Verma**, PhD MBA, NET; Management Sciences  
**Dr Kamalkant Vashisth**, PhD, NET; Management Sciences  
**Dr Nitin Gupta**, PhD, MBA, PGDPM & LW; Management  
**Dr Amar Rao**, MBA, NET, PhD; Management Sciences  
**Dr Sandeep Singh**, MBA, PhD; HRM

## Assistant Professors

**Dr Prachi Kapil**, MBA; PhD; Management  
**Dr Vinay Negi**, PhD; Marketing  
**Mr Vijay Kumar**, MBA; Management; PhD (Pursuing)  
**Mr Ankit Shukla**, Master of Hotel Management; PhD (Pursuing)  
**Ms Varsha Patil**, CS, B Com; Commerce  
**Mr Shard,**  
**Mr Rishabh Shyam**, MBA  
**Mr Nagendra Yadav**, Master in Hotel Management Diploma in German Language  
**Dr Ankita Verma**, MBA, PhD; HR  
**Dr Rosey Dhanta**, PhD  
**Dr Supriya Srivastava**, PhD. NET  
**Ms Chanderika Thakur**, MAB (PhD Pursuing)  
**Ms Palak Chauhan**, MAB (PhD Pursuing)

## Academic Programmes – Eligibility & duration

### BBA (3 years)

Eligibility : 10+2 (Any stream) with minimum 55% marks  
Duration: 6 semesters

### BBA (Rural Management)

Eligibility : 10+2 (Any stream) with minimum 55% marks  
Duration: 8 semesters

### BBA Aviation and Management

Eligibility : 10+2 (Any stream) with minimum 55% marks  
Duration: 8 semesters

### BBA Computer Science & Entrepreneurship

Eligibility : 10+2 (Any stream) with minimum 55% marks  
Duration: 8 semesters

### BBA Data Analytics, BBA Banking & Insurance, BBA Digital Marketing, BBA Financial Markets, BBA Hospitality, BBA Information Technology, BBA Logistics & Supply Chain Management

Eligibility : 10+2 (Any stream) with minimum 55% marks  
Duration: 8 semesters

### B Com(H)

Eligibility : 10+2 (Any stream) with minimum 50% marks  
Duration: 8 semesters

### BSc Hospitality & Hotel Administration

Eligibility : 10+2 (Any stream) with minimum 55% marks  
Duration: 6 semesters

### BSc Hospitality and Catering Management

Eligibility : 10+2 (Any Stream) with minimum 55% marks  
Duration: 6 Semesters

### BSc Travel & Tourism Management

Eligibility : 10+2 (Any Stream) with minimum 55% marks  
Duration: 6 Semesters

### BA (Hons) Film & Animation

Eligibility: 10+2 (Any stream) with minimum 55% marks.  
Duration: 6 semesters

### MBA

Eligibility : Bachelor's Degree (Any discipline) with minimum 50% marks.  
Duration: 4 semesters



### **PhD Management**

Eligibility : Two year masters degree in Economics/ Management/ related discipline with minimum 55% marks OR  
4-year Bachelor's degree with Research in related discipline with minimum CGPA of 7.5/10 or 75% marks  
Duration: 6 semesters

### **PhD Applied Economics**

Eligibility : Two year masters degree in Economics/ Management/ related discipline with minimum 55% marks OR  
4-year Bachelor's degree with Research in related discipline with minimum CGPA of 7.5/10 or 75% marks  
Duration: 6 Semesters

### **PhD Human Resource**

Eligibility : Master's degree in Economics, Business, Management, Social Sciences, or any related discipline with minimum 60% marks  
Duration: 6 semesters

### **PhD Finance**

Eligibility : Two year masters degree in Economics/ Management/ related discipline with minimum 55% marks OR  
4-year Bachelor's degree with Research in related discipline with minimum CGPA of 7.5/10 or 75% marks  
Duration: 6 semesters

### **PhD Public Relations, Project Management, Supply Management**

Eligibility : Two year masters degree in Economics/ Business/ Management/ related discipline with minimum 55% marks OR  
4-year Bachelor's degree with Research in related discipline with minimum CGPA of 7.5/10 or 75% marks  
Duration: 6 semesters

### **PhD Water Management**

Eligibility : Two year masters degree in Engineering/ Science/ Economics/ Management/ related discipline with minimum 55% marks  
Duration: 6 semesters

### **PhD Disaster Management**

Eligibility : Two year masters degree in Economics/ Business/ Management/ related discipline with minimum 55% marks OR  
4-year Bachelor's degree with Research in related discipline with minimum CGPA of 7.5/10 or 75% marks  
Duration 6 semesters

## **Basis of Admissions:**

Merit of the qualifying examination or otherwise specified entrance exams for the following programmes

- MBA: GMAT/CAT/MAT/SAT or state entrance, and letter of intent and faculty interaction, are to be filled on the basis of merit of bachelor's degree with candidates having at least 50% marks
- PhD: Shoolini University's multiple choice entrance test, and assessment of research aptitude through concept note & faculty interaction

- Reservation of seats for bonafide Himachali/ SC/ ST/ physically handicapped/economically weaker section candidates as per the rules of Himachal Pradesh & Central Government.
- Number of seats for Lateral Entry as per AICTE norms.
- Minimum eligibility marks relaxable for SC/ST/backward classes and others as per the rules of Himachal Pradesh Government.
- Roaster for admissions as per HP Government rules.
- Criteria for admissions to professional courses shall be in accordance with HP government Notification No. EDN (TE) F (10) 2/2018 dated 4th May 2018.



**Faculty of Liberal  
Arts & Ancient  
Indian Wisdom**





## Prof Manju Jaidka

MA, PhD  
Dean

Formerly a Professor and Chairperson at Panjab University, Chandigarh, Manju Jaidka has held academic and administrative responsibilities at the national as well as international level. She is the Founder President MELOW, the Society for the Study of the Multi-Ethnic Literatures of the World, an academic association with international linkages, which has held twenty-two conferences since 1998. Additionally, Jaidka has been the Chairperson of the Chandigarh Sahitya Akademi, focusing on the promotion of literary activities in Chandigarh.

Manju Jaidka has travelled and lectured extensively in India as well as the US, UK, Europe, Canada, China, Nepal, etc. She has received prestigious postdoctoral fellowships from the Rockefeller Foundation, the Fulbright Foundation, and the UGC, held assignments at universities like Oxford, Harvard, Yale, Illinois, Iowa, New York, and Concordia, published extensively in her field, and has the distinction of being an award-winning creative writer who continues to work on poetry, drama and fiction along with her academic assignments.



# Faculty of Liberal Arts & Ancient Indian Wisdom

## Chitrakoot School of Liberal Arts

### English Language & Literature:

A well-known and globally acclaimed Prof Manju Jaidka mentors the two-year MA (English) and three-year BA (Hons) English courses with the skills needed for professional career in teaching, editing, creative writing and corporate training. Being the part of Sahitya Academy, Chandigarh and several literary bodies, Prof Jaidka's intellectual experience not only help learners to have the insights of literary world but also expose them to the needs and requirements of the professional life. Each programme covers every genre of language and literature focusing on research and career oriented activities.

Being the knowledge partner with various literary events, students learn the various aspects related to literature through the interaction with renowned personalities of the field.

### Faculty Members

#### Professors

**Prof Manju Jaidka**, PhD  
**Prof Tej Nath Dhar**, PhD  
**Prof Indu Rihani**, PhD

#### Associate Professors

**Dr Purnima Bali**, PhD  
**Dr Navreet Kaur Sahi**, PhD

#### Assistant Professors

**Dr Kunwar Siddarth Dadhwal**, PhD  
**Dr Ekta Singh**, PhD  
**Mr Neeraj Pizar**, MA, PhD (Pursuing)  
**Mr Rajesh Williams**, MA  
**Mr Hemant Kumar Sharma**, MA  
**Mr Samrat Sharma**, MA, PhD (Pursuing)  
**Mr Ankur Saxena**, MA; Music, Dramatic Arts

### Academic programmes

- BA (Hons) Economics & Data Analysis
- BA (Hons) English
- BA (Hons) Hindi
- BA (Hons) History
- BA (Hons) Political Science
- B Des
- BA (Hons) Film & Animation
- MA English Literature
- MA Political Science
- MA History
- PhD History
- PhD Mass Communication
- PhD Sanskrit
- PhD Sociology
- PhD Theology
- PhD Economics
- PhD English
- PhD Political Science

### Academic Programmes – Eligibility & duration

#### BA (Hons) Economics & Data Analysis

#### BA (Hons) English

#### BA (Hons) Hindi

#### BA (Hons) History

#### BA (Hons) Political Science

Eligibility : 10+2 (in any stream) with minimum 55% marks

Duration: 8 semesters

#### B Des

Eligibility : 10+2 (in any stream) with minimum 55% marks,

Duration: 8 semesters

#### BA (Hons) Film & Animation

Eligibility : 10+2 (Any stream) with minimum 55% marks.

Duration: 6 semesters



**MA English Literature**

Eligibility : Graduation in any discipline with English as one of the subject and minimum 55% marks

Duration: 4 semesters

**MA Political Science**

Eligibility : Graduation in any discipline with Political Science as one of the subject and minimum 55% marks

Duration: 4 semesters

**MA History**

Eligibility : Graduation in any discipline with History as one of the subject and minimum 55% marks

Duration: 4 semesters

**PhD History**

Eligibility : Two year masters degree in History/ related discipline with minimum 55% marks OR 4-year Bachelor's degree with Research in related discipline with minimum CGPA of 7.5/10 or 75% marks

Duration: 6 semesters

**PhD Mass Communication**

Eligibility : Two year masters degree in Mass communication or Journalism/ related discipline with minimum 55% marks OR 4-year Bachelor's degree with Research in related discipline with minimum CGPA of 7.5/10 or 75% marks

Duration: 6 semesters

**PhD Sanskrit**

Eligibility : Two year masters degree in Sanskrit/ related discipline with minimum 55% marks OR 4-year Bachelor's degree with Research in related discipline with minimum CGPA of 7.5/10 or 75% marks

Duration: 6 semesters

**PhD Sociology**

Eligibility : Two year masters degree in Social studies/ related discipline with minimum 55% marks OR 4-year Bachelor's degree with Research in related discipline with minimum CGPA of 7.5/10 or 75% marks

Duration: 6 semesters

**PhD Theology**

Eligibility : Two year masters degree in Theology or religious studies/ related discipline with minimum 55% marks OR 4-year Bachelor's degree with Research in related discipline with minimum CGPA of 7.5/10 or 75% marks

Duration: 6 semesters

**PhD Economics**

Eligibility : Two year masters degree in Economics/ Management/ related discipline with minimum 55% marks OR 4-year Bachelor's degree with Research in related discipline with minimum CGPA of 7.5/10 or 75% marks

Duration: 6 Semesters

**PhD English**

Eligibility : Two year masters degree in English Literature/ related discipline with minimum 55% marks OR 4-year Bachelor's degree with Research in related discipline with minimum CGPA of 7.5/10 or 75% marks

Duration: 6 semesters

**PhD Political Science**

Eligibility : Two year masters degree in Social sciences/ Management/ related discipline with minimum 55% marks OR 4-year Bachelor's degree with Research in related discipline with minimum CGPA of 7.5/10 or 75% marks

Duration: 6 semesters



## School of Journalism and New Media

Under the mentorship of well-known and nationally acclaimed journalist Mr. Vipin Pubby, a long-term former Editor of The Indian Express, the 3-year BA in Journalism and Mass Communication course equips students with the skills needed for careers in reporting, journalism, advertising, news analysis and public relations. During his 37 years+ experience in journalism, Vipin Pubby has reported extensively from across the country, including from the National Capital, the North-East, Gujarat, Jammu and Kashmir, Punjab, Haryana and Himachal Pradesh, and abroad. He has trained hundreds of young journalists many of whom are established names in the national print and electronic media.

### Facilities

IT Centre/ e-Lab/ Language Lab/ Audio-Visual Room/ Mediation Hall/ Tutorial Rooms/ Conference Rooms/ Shoolini Radio/ Shoolini TV/ Recording studios/ Seminar Halls/ Video-conferencing/ Online Lectures.

### Faculty Members

#### Professors/Directors

**Mr Vipin Pubby**, Director, Journalism & Mass Communication

**Mrs Nishtha Shukla**, Director - Communication

#### Associate Professor

**Mr Neeraj Kumar**, MA; Political Science

**Dr Ranjna Thakur**, PhD

**Dr Nisha Kapoor**, PhD

#### Assistant Professors

**Dr Prakash Chand**, PhD

**Ms Indu Negi**, Master in Mass Communication, PhD (Pursuing)

**Mr Paarth Kaushal**, Master in Mass Communication, PhD (Pursuing)

#### Academic Programmes

- BA Journalism and Mass Communication
- MA Journalism
- PhD Journalism

### Academic Programmes – Eligibility & duration

#### BA Journalism and Mass Communication

Eligibility : 10+2 (Any stream) with minimum 55% marks

Duration: 6 semesters

#### MA Journalism

Eligibility : Graduation in any discipline with minimum 55% marks

Duration: 4 semesters

#### PhD Journalism

Eligibility : Two year masters degree in Journalism/ Social Sciences/ related discipline with minimum 55% marks OR 4-year Bachelor's degree with Research in related discipline with minimum CGPA of 7.5/10 or 75% marks

Duration: 6 semesters





# School of Ancient Wisdom and Yogic Studies

Considered as the birthplace of Indian culture including yoga, the Himalayas with cool summers and pleasant sunny winters are the ideal destination for pursuing yogic practices and scientific research. With the declaration of 21st June as International Yoga Day by the United Nations, there has been tremendous interest and increased awareness of the benefits that practicing yoga has on our mental and physical health. As a consequence, several job opportunities are available for yoga professionals and researchers in various fields like educational institutions, health resorts, gymnasia, medical institutions and therapy centres both within and outside the country. Shoolini University is the first institute to start B.Sc. Yoga in the region. The programme has been designed to provide both theoretical knowledge and hands-on training, besides transformational learning of students under the direction of experienced teachers, spearheaded by Prof PK Khosla, Chancellor.

## Facilities

Mediation Hall/ Yoga Centre/ IT Centre/ e-Lab/ Tutorial Rooms/ Conference Rooms/ Seminar Halls/ Video-conferencing/ Online Lectures.

## Faculty Members

### Associate Professors

**Dr Subodh Saurabh Singh**, PhD

**Dr Mala Tripathi**, PhD

### Assistant Professors

**Dr Rohit Chobe**, PhD

**Dr Divakar**, PhD

**Ms Bhawna**, M Sc, PhD (Pursuing)

**Mr Anupama Chandel**, MA, Instructor

## Academic Programmes

- BSc/ BA Yoga
- MA/ M Sc Yoga
- PhD Yoga

## Academic Programmes – Eligibility & duration

### BSc/ BA Yoga

Eligibility : 10+2 (Any stream) with minimum 55% marks

Duration: 6 semesters

### MA/ MSc Yoga

Eligibility : Graduation in any stream with minimum 50% marks

Duration: 4 semesters

### PhD Yoga

Eligibility : Two year masters degree in Yoga/ Spirituality/ related discipline with minimum of 55% marks OR

4-year Bachelor's degree with Research in related discipline with minimum CGPA of 7.5/10 or 75% marks

Duration: 6 semesters





# Faculty of Legal Sciences





## Dr Nandan Sharma

PhD, LLM  
Associate Dean

Dr Nandan Sharma has pioneered new skills-based teaching methods, transforming traditional legal education. His research on the dynamics of the worldwide patent law, with a focus on the pharmaceutical business in India, earned him a PhD from Himachal University. Nandan has over 15 years of experience in academia, research, and administration. Prior to joining Shoolini University, he taught at the LR Institute of Legal Studies, the Law School of IEC University, and Maharaja Agrasen University. He teaches intellectual property, alternative dispute resolution, and banking law. He has written five books on issues such as intellectual property rights, women's empowerment, precedent, media laws, and human rights, and he has published over twenty research papers in prestigious journals. Nandan is the National Secretary at Law and Social Justice Unit of National Youth Council of India.

# School of Law

As a student at the School of Law, you will be exposed to legal principles in a wide array of topics and also learn analytical and critical-thinking skills from experienced legal practitioners, providing consultancies to law firms and corporate world. The School offers a great learning experience and a pathway to successful practicing or non-practicing legal career. Need for legal services in new areas of law such as cyber law, international business transaction law, health care and environmental laws, and intellectual property rights (IPR), has opened unlimited career opportunities with competitive starting salaries.

## Facilities

Moot Court /IT Centre/ e-Lab/ Language Lab / Audio-Visual Room/ Tutorial Rooms /Conference Rooms /Seminar Halls/ Video conferencing/Online lectures.

## Faculty Members

### Adjunct Professors

**Mr SS Thakur** former Hon'ble Justice of High Court of Himachal Pradesh

**Prof NK Thakur**, PhD (Law)

### Professors

**Dr Nandan Sharma**, PhD, LLM, Associate Dean

### Associate Professors

**Dr Renu Pal Sood**, PhD

**Dr Chander Mohan Gupta**, LLM, MBA, PhD

### Assistant Professors

**Ms Palak Sharma**, LLM

**Ms Richika**, LLM

**Ms Anupriya Thakur**, LLB, PGDPM & LW

**Ms Monika Thakur**, LLM

**Ms Swati Soni**, LLM, PhD (Pursuing)

**Ms Poonam Pant**, LLM, PhD (Pursuing)

**Ms Ishani Vaidya**, LLM, PhD (Pursuing)

**Ms Mukul Rani Parajuli**, LLM, PhD (Pursuing)

**Mr Vineet Kumar**, LLM, PhD (Pursuing)

## Academic Programmes

- BA LLB
- LLB
- LLM
- PhD Human Rights/Cyber Law/IPR/ADR

## Academic Programmes – Eligibility & duration

### BA LLB

Eligibility : 10+2 in any discipline with minimum 55% marks

Duration: 10 semesters

### LLB

Eligibility : Graduation in any discipline with minimum 55% marks

Duration: 6 semesters

### LLM

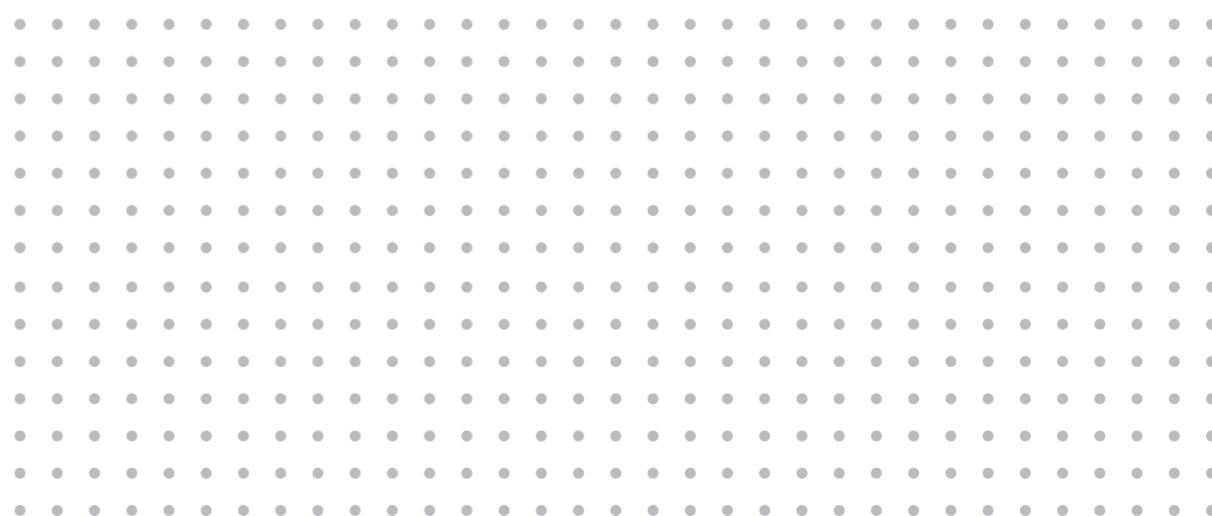
Eligibility : LLB/ BALLB with minimum 55% marks.

Duration: 2 Semesters

### PhD Human Rights/Cyber Law/IPR/ADR

Eligibility : Masters degree in Legal Studies/ related discipline with minimum of 55% marks

Duration: 6 semesters





## Basis of Admissions:

PhD: Shoolini University's multiple choice entrance test, and assessment of research aptitude through concept note & faculty interaction

- Reservation of seats for bonafide Himachali/ SC/ ST/ physically handicapped/economically weaker section candidates as per the rules of Himachal Pradesh & Central Government.
- Number of seats for Lateral Entry as per AICTE norms.
- Minimum eligibility marks relaxable for SC/ST/backward classes and others as per the rules of Himachal Pradesh Government.
- Roaster for admissions as per HP Government rules.
- Criteria for admissions to professional courses shall be in accordance with HP government Notification No. EDN (TE) F (10) 2/2018 dated 4th May 2018.



**Faculty of  
Pharmaceutical  
Sciences**





# Prof Deepak Nandkishore Kapoor,

PhD,  
Dean

Prof Deepak Kapoor got his PhD in Pharmaceutical Sciences from UGC-CAS, UIPS, Panjab University, Chandigarh. He has more than ten years of teaching, research and industrial experience. In industry, he has worked on formulation, and research and development for international regulated and domestic markets. Prof Kapoor's key areas of extensive research represent development of novel drug delivery systems with a focus on nanoparticles, nanoemulsions, niosomes, liposomes, ethosomes, and implantable, topical and transdermal systems. He has various national and international publications in the form of a monograph series book, book chapters, and research and review articles. He has also filed patents on development of novel pharmaceutical formulations.

# Faculty of Pharmaceutical Sciences

School of Pharmaceutical Sciences is Ranked 39th among Top Pharmacy Colleges in India in NIRF Ranking 2019 by the Ministry of Human Resource Development, GOI. The B Pharmacy programme is accredited by National Board of Accreditation (NBA).

The school focuses on excellence in teaching, promoting life-long-learning and preparing students for challenges in the field of pharmacy, committed to produce quality human resource as per the requirements of the industry and community for the welfare of the people and to build national healthcare system. It is approved by AICTE and PCI and has Memorandum of Understandings/ collaborations with several reputed multinational pharmaceutical industries for the student internship/ training and research activities. It is fascinated with highly qualified and experienced faculty including PhDs who enjoy national and international reputation for research and education. In addition to teaching and research, our faculty members are also involved in professional activities such as consultative services for pharmaceutical industry, clinical pharmacy practice, drug information services, and analysis of traditional remedies.

The National Conference on 'Drug Discovery, Development and Clinical Trials'; National Seminar on 'Importance of Cell Lines in Pharmaceutical Research in India' and 'An Interface for bridging the skill gap between Industry & Academia'; National Conference on 'Research Trends in Future Drug Development: Exploration of Aromatic Flora'; Workshops on 'Emerging Trends in Pharmacological Education & Research'; Celebration of World Pharmacist Day and 'Pharma-Sprint' are some of the important events organised at the School.

## Summit Research Programme - A reimagined B Pharmacy degree programme

Shoolini has taken the lead to develop a unique research oriented degree programme that prepares students for global opportunities at leading academic institutions and corporate R&D teams. Fully integrated with regular engineering curriculum, the Summit Research programme provides hands-on exposure to high quality research, experience with writing technical papers, personal mentorship and interactions with internationally acclaimed research practitioners and experts.

- Work with faculty and PhD students on live cutting-edge research
- Option to study and conduct lab work in premier universities abroad
- Get individually mentored by academicians and practitioners
- Need-Blind Admission policy

## Current Areas of Research

- Sustainable utilization of Himalayan biodiversity
- Biological potential of natural products for treating human diseases and disorders
- Formulation and development of pharmaceutical preparations
- Drug Delivery Systems
- Drug Discovery and QSAR Modeling

## Linkages with International Academia and Multinational Pharmaceutical Industries

The School of Pharmaceutical Sciences has a quadripartite alliance with the Pharmacy and Poisons Board (PPB) of the Government of Kenya, Tirupati Medicare Ltd and Venus Remedies Ltd. for joint research. It has also developed alliances with well-established concern like, Zydus Cadila Healthcare Ltd, Fresenius Kabi Oncology Ltd, Alkem Labs, Alembic Ltd, Meridian Ltd, Ozone Ltd Macleods Pharma, Tripuati Medicare Ltd and US Vitamin Ltd for student training and research projects.

The School has research projects from DST, ICMR, DRDO and INMAS, and consultancy projects from Meridian Medicare Ltd., Tirupati Medicare Ltd., All India Institute of Ayurveda, New Delhi and Uttarakhand Ayurveda University, Haridwar.

## Academic & Research Scholarships

The School of Pharmacy is recognised for the award of AICTE-GPAT scholarships for the following M Pharmacy in Pharmaceutical Chemistry and Pharmacology.



## Faculty Members

### Adjunct Professors & Visiting Faculty

**Dr Amarjeet Singh**, PhD (Pharmaceutical Chemistry);

Adjunct Professor

**Dr Nirmalendu Kumar** Pandeya, PhD; Adjunct Professor

**Dr Gaurav Sahay**, PhD; Adjunct Professor

**Dr Kamal Dua**, PhD; Visiting Faculty

**Mr Sumit Gupta**, MBA; Visiting Faculty

### Professors

**Dr Deepak Nandkishore Kapoor**; PhD; Pharmaceutics

**Dr Rohit Goyal**, PhD; Pharmacology

**Dr Deepak Kumar**, M Pharma, PhD; Pharmaceutical Chemistry

### Associate Professors

**Dr Poonam Negi**, PhD, GPAT; Pharmaceutics

**Dr Navneet Kumar Upadhyay** M Pharmacy; Pharmaceutics

**Dr Swati Pundir**, M Pharm, PhD; Pharmacognosy

**Dr Lalit Sharmar**, M Pharm. PhD; Pharmacognosy

**Mr Anshul Jamwal**, M Pharm

### Assistant Professors

**Dr Arun Prashar**, M Pharma, PhD; Pharmacology

**Dr Aditi Sharma**, M Pharm, GPAT; Pharmacology

**Dr Hemlata Kaurav**, PhD

**Mr Abhishek Kumar Sharma**, M Pharm, GPAT, PhD (Pursuing); Pharmaceutics

**Ms Chetana Kumari**, M Pharma, GPAT, PhD (Pursuing); Pharmacy

**Mr Sunil Kumar**, M Pharma; Pharmaceutical Chemistry, PhD (Pursuing)

**Ms Dhriti Verma**, M Pharma, PhD (Pursuing); Pharmaceutics

**Ms Monika Prakash Singh**, M Pharm, PhD (Pursuing); Natural Products

**Ms Nishtha**, PhD (Pursuing)

**Mr Deepak Kumar**, PhD (Pursuing)

**Ms Shikha Mahant**, PhD (Pursuing)

**Mr Himanshu**, PhD (Pursuing)

**Ms Tamana Bhardwaj**, M Pharm

**Ms Anjali Kaushal**, M Pharm

**Mr Raveen Chauhan**, Doctor of Pharmacy; Pharmacy

**Mr Prashanta Kumar** Deb, M Pharma, PhD (Pursuing)

**Ms Shivanshi**, MVSc; Veterinarian cum Assistant Professor

**Ms Simrandeep Kaur**, M Pharm

**Ms Samridhi Sharma**, M Pharm

**Ms Shubhangi Sood**, M Pharm

**Ms Sonia Rani**, M Pharm

### Academic Programmes

- B Pharmacy
- B Pharmacy (Lateral Entry)
- M Pharmacy
  - Pharmaceutics
  - Pharmacology
  - Pharmacognosy
  - Pharmaceutical Chemistry
- PhD Pharmaceutical Sciences
  - Pharmaceutics
  - Pharmacology
  - Medicinal Chemistry
  - Pharmacognosy
  - Pharmaceutical Chemistry



## Academic Programmes – Eligibility & duration

### **B Pharmacy**

Eligibility : 10+2 (PCB/PCM) with minimum 60% marks

Duration: 8 semesters

### **B Pharmacy**

#### **(LEET)**

Eligibility : Diploma in Pharmacy with 60% marks from an institution approved by Pharmacy Council of India

Duration: 6 semesters

### **M Pharmacy (Pharmaceutics)**

Eligibility : B Pharmacy from an institution approved by the Pharmacy Council of India with minimum 55% marks

Duration: 4 semesters

### **M Pharmacy (Pharmacology)**

Eligibility : B Pharmacy from an institution approved by the Pharmacy Council of India with minimum 55% marks

Duration: 4 semesters

### **M Pharmacy (Pharmaceutical Chemistry)**

Eligibility : B Pharmacy from an institution approved by the Pharmacy Council of India with minimum 55% marks

Duration: 4 semesters

### **M Pharmacy Pharmacognosy**

Eligibility : B Pharmacy from an institution approved by the Pharmacy Council of India with minimum 55% marks

Duration: 4 semesters

### **PhD Pharmaceutical Sciences (Pharmaceutics, Pharmacology, Medicinal Chemistry, Pharmacognosy, Pharmaceutical Chemistry)**

Eligibility : Two year masters degree in Pharmacy/ Sciences/ related discipline with at least 55% marks.

Duration: 6 semesters

## Basis of Admissions:

- Reservation of seats for bonafide Himachali/ SC/ ST/ physically handicapped/economically weaker section candidates as per the rules of Himachal Pradesh & Central Government.
- Number of seats for Lateral Entry as per AICTE norms.
- Minimum eligibility marks relaxable for SC/ST/backward classes and others as per the rules of Himachal Pradesh Government.
- Roaster for admissions as per HP Government rules.
- Criteria for admissions to professional courses shall be in accordance with HP government Notification No. EDN (TE) F (10) 2/2018 dated 4th May 2018.



# Faculty of Science



## Prof Sunil Puri

PhD, Post-doc Oxford  
Dean

The Faculty of Science is dynamic and progressive in its development of new programme initiatives. It is well placed to contribute substantially to the goal of Shoolini University becoming a research-led organisation. The teaching is by way of interactive sessions between students and teachers. Our programmes ensure a coherent degree structure while encouraging interdisciplinary approach. The faculty members keep themselves abreast with new findings through regular academic activities such as seminars, workshops and conferences. They have also developed liaisons with research institutions of repute in India and abroad. Their research activities are well-funded through extra-mural research funding from government agencies such as DRDO, DST, etc. Our research-led teaching paves the way for entry into different careers since it equips students with advanced transferable skills in information gathering, analysis and presentation, which are vital tools in the field of science. Graduate and post-graduate students are required to undertake research/ projects.



# Faculty of Science

The Faculty of Science is dynamic and progressive in its development of new programme initiatives. It is well placed to contribute substantially to the goal of Shoolini University becoming a research-led organisation. The teaching is by way of interactive sessions between students and teachers. Our programmes ensure a coherent degree structure while encouraging interdisciplinary approach. The faculty members keep themselves abreast with new findings through regular academic activities such as seminars, workshops and conferences. They have also developed liaisons with research institutions of repute in India and abroad. Their research activities are well-funded through extra-mural research funding from government agencies such as DRDO, DST, etc. Our research-led teaching paves the way for entry into different careers since it equips students with advanced transferable skills in information gathering, analysis and presentation, which are vital tools in the field of science. Graduate and post-graduate students are required to undertake research/ projects.

## School of Biological & Environmental Sciences

### Faculty Members

#### Professor of Eminence/ Adjunct & Visiting Faculty

**Dr IS Dua**, PhD, Adjunct Professor; Botany  
**Prof OP Toky**, PhD, Professor of Eminence; Botany  
**Ms Shashi Sehgal**, Adjunct faculty; Botany  
**Prof PS Kalsi**, PhD; Professor of Eminence  
**Dr RC Rana**, PhD; Professor of Eminence  
**Dr AK Sharma**, PhD; Professor of Eminence  
**Dr AN Kaushal**, PhD; Professor of Eminence  
**Mr ML Sharma**, BE; Visiting Professor  
**Prof SK Sharma**, PhD; Visiting Professor  
**Prof SS Bari**, PhD; Visiting Professor  
**Prof Suman Bala Beri**, PhD; High Energy Physics  
**Dr Harrison B Prosper**, PhD; High Energy Physics  
**Dr Bhawandeep**, PhD; Post Doc Fellow

### Professors

**Prof PK Khosla**, PhD, Post-doc Oxford; Former VC HP Agricultural University; Botany, Genetics  
**Dr JM Julka**, PhD; Former Visiting Fellow Smithsonian Institution, USA; Former Joint Director & Emeritus Scientist, ZSI; Environment Biology, Zoology  
**Prof Sunil Puri**, PhD, Post-doc Oxford; Former Director Higher Education, Indira Gandhi Agricultural University, Raipur; Botany  
**Prof Nand Lal**, PhD, Post-doc, Psychology

### Associate Professors

**Dr Rachna Verma**, PhD, M Phil, NET; Botany  
**Dr Anita Chauhan**, PhD

### Assistant Professors

**Dr Amita Kumari**, PhD, NET; Botany  
**Dr Radha**, M Phil; PhD; Botany  
**Dr Priyanka Kumari**, PhD; Zoology  
**Ms Ruhi Thakur**, M Sc, PhD (Pursuing); Zoology  
**Dr Dipika Rana**, PhD; Environmental Sciences  
**Dr Ritesh Banerjee**, PhD; Environmental Sciences  
**Dr Vijay Chauhan**, PhD; Botany  
**Dr Priyanka Chauhan**, PhD  
**Ms Isha Jaswal**, M Phil, PhD (Pursuing)  
**Ms Sangeeta Kakkar**, PhD (Pursuing)  
**Dr Dhriti Kapoor**, PhD

### Academic Programmes

- B Sc (Hons) Botany
- B Sc (Hons) Zoology
- B Sc (Hons)
- BA (Hons)/ B Sc (Hons) Psychology and Counseling
- BA (Hons)/ B Sc (Hons) Behavioural & Neuro Psychology
- BA (Hons)/ B Sc (Hons) Clinical Psychology
- MSc Botany
- M Sc Zoology
- M Sc Environmental Sciences
- MA/ M Sc Clinical Psychology
- MA/ M Sc Psychology
- PhD Botany
- PhD Zoology
- PhD Environmental Sciences
- PhD Psychology

## Academic Programmes – Eligibility & duration

### **BSc (Hons) Botany**

Eligibility: 10+2 in science stream with minimum 55% marks

Duration: 8 semesters

### **BSc (Hons) Zoology**

Eligibility: 10+2 in science stream with minimum 55% marks

Duration: 8 semesters

### **B Sc (Hons)**

Eligibility: 10+2 in science stream with minimum 55% marks

Duration: 8 semesters

### **BA (Hons)/ B Sc (Hons) Psychology and Counseling**

Eligibility: 10+2 in science stream with minimum 55% marks

Duration: 8 semesters

### **BA (Hons)/ B Sc (Hons) Behavioural & Neuro Psychology**

Eligibility: 10+2 in science stream with minimum 55% marks

Duration: 8 semesters

### **BA (Hons)/ B Sc (Hons) Clinical Psychology**

Eligibility: 10+2 in science stream with minimum 55% marks

Duration: 8 semesters

### **MSc Botany**

Eligibility: BSc with Botany as one of the subjects with minimum 55% marks

Duration: 4 semesters

### **MSc Zoology**

Eligibility: BSc with Zoology as one of the subjects with minimum 55% marks

Duration: 4 semesters

### **MSc Environment Science**

Eligibility: BSc in any stream with minimum 50% marks

Duration: 6 semesters

### **MA/ MSc Psychology**

Eligibility : Graduation in any discipline with Psychology as one of the subject and minimum 55% marks

Duration: 4 semesters

### **MA/ MSc Clinical Psychology**

Eligibility : Graduation in any discipline with Psychology as one of the subject and minimum 55% marks

Duration: 4 semesters

### **PhD Botany**

Eligibility: Two year masters degree in Life Sciences/ related discipline with minimum of 55% marks OR 4-year Bachelor's degree with Research in related discipline with minimum CGPA of 7.5/10 or 75% marks

Duration: 6 semesters

### **PhD Zoology**

Eligibility Two year masters degree in Life Sciences/ related discipline with minimum of 55% marks OR 4-year Bachelor's degree with Research in related discipline with minimum CGPA of 7.5/10 or 75% marks

Duration: 6 semesters

### **PhD Environmental Sciences**

Eligibility: Two year masters degree in Life Sciences/ related discipline with minimum of 55% marks OR 4-year Bachelor's degree with Research in related discipline with minimum CGPA of 7.5/10 or 75% marks

Duration: 6 semesters

### **PhD Psychology**

Eligibility : Two year masters degree in Psychology/ related discipline with minimum 55% marks OR 4-year Bachelor's degree with Research in related discipline with minimum CGPA of 7.5/10 or 75% marks

Duration: 6 semesters

## **School of Advanced Chemical Sciences**

### **Professors**

**Dr Pradeep Singh**, PhD; Physical Chemistry

**Dr Pankaj Raizada**, PhD; Inorganic Chemistry

**Dr Gaurav Sharma**, PhD

**Dr Amit Kumar**, PhD



### **Associate Professors**

**Dr Prem Prakash Sharma**, PhD

### **Assistant Professors/ Research Associates**

**Dr Prem Prakash Sharma**, PhD

**Ms Ekta Bala**, MSc

**Dr Anita Sudhaik**, PhD

**Dr Prem Prakash Sharma**, PhD

**Ms Ekta Bala**, MSc

**Dr Anita Sudhaik**, PhD

**Dr Sonu**, PhD

**Dr Saima**, PhD

### **Academic Programmes**

- BSc (Hons) Chemistry
- B Sc (Hons) Nanotechnology
- B Tech Nanotechnology
- MSc/ M Tech Nanotechnology
- M Sc Chemistry Research
- PhD Chemistry

## **Academic Programmes – Eligibility & duration**

### **B Sc (Hons) Nanotechnology**

Eligibility: 10+2 with any of three following subjects: Physics, Mathematics, Chemistry, computer sciences, electronics, information technology, biology, informatics practices, biotechnology, technical vocational subject, agriculture, engineering graphics, business studies, entrepreneurship, in PCB/ PCM with minimum 60% marks

Duration: 8 semesters

### **B Tech Nanotechnology**

Eligibility: 10+2 with any of the three following subjects – physics / mathematics / chemistry / computer science / electronics / information technology / biology / informatics practices / biotechnology / technical vocational subject / agriculture / engineering graphics / business studies / entrepreneurship and minimum 60% marks

Duration: 8 semesters

### **MSc/ M Tech Nanotechnology**

Eligibility: BSc or B. Tech Nanotechnology or an MSc Nanotechnology/ Biotechnology/ Microbiology/ Bio-chemistry or any other branch of Life Sciences with minimum of 50% marks

Duration: 4 semesters

### **BSc (Hons) Chemistry**

Eligibility: 10+2 in Science stream with minimum 55% marks

Duration: 8 semesters

### **MSc Chemistry**

Eligibility: BSc with Chemistry as one of the subjects with minimum 55% marks

Duration: 4 semesters

### **PhD Chemistry**

Eligibility: Two year masters degree in Life Sciences/ Physical Sciences/ related discipline with minimum of 55% marks OR 4-year Bachelor's degree with Research in related discipline with minimum CGPA of 7.5/10 or 75% marks

Duration: 6 semesters

## **School of Physics and Materials Science**

### **Professors**

**Dr Radheshyam Rai**, PhD, Post-doc

### **Associate Professors**

**Dr Rakesh Kumar Shukla**, PhD

### **Assistant Professors**

**Dr Anirban Saha**, PhD, Post Doc; Physics

**Dr Mamta Shandilya**, PhD; Nanophysics

**Dr Pawan Kumar**, M Phil PhD; Physics

**Dr Rohit Jasrotia**, M Sc, PhD; Physics

**Dr Pooja Dhiman**, PhD; Physics

**Dr Itika Kainthla**, PhD

**Ms Gun Anit Kaur**, M Sc; PhD (Pursuing); Physics

**Dr Nitika Devi**, PhD

**Dr Garima Rana**, PhD

**Dr Abhishek Kandwal**, PhD, Post-doc

### **Academic Programmes**

- BSc (Hons) Physics
- MSc Physics
- PhD Physics
- PhD Materials Science

## Academic Programmes – Eligibility & duration

### **BSc (Hons) Physics**

Eligibility: 10+2 in Science stream with minimum 55% marks

Duration: 8 semesters

### **MSc Physics**

Eligibility: BSc with Physics as one of the subject with minimum 55% marks.

Duration: 8 semesters

### **PhD Physics**

Eligibility: Two year masters degree in Life Sciences/ Physical Sciences/ related discipline with minimum of 55% marks OR

4-year Bachelor's degree with Research in related discipline with minimum CGPA of 7.5/10 or 75% marks

Duration: 4 semesters

### **PhD Materials Science**

Eligibility: Two year masters degree in Life Sciences/ Physical Sciences/ related discipline with minimum of 55% marks OR

4-year Bachelor's degree with Research in related discipline with minimum CGPA of 7.5/10 or 75% marks

Duration: 4 semesters

## Basis of Admissions:

Merit of the qualifying examination or otherwise specified entrance exams for the following programmes:

• **PhD:** Shoolini University's multiple choice entrance test, and assessment of research aptitude through concept note & faculty interaction

- Reservation of seats for bonafide Himachali/ SC/ ST/ physically handicapped/economically weaker section candidates as per the rules of Himachal Pradesh & Central Government.
- Number of seats for Lateral Entry as per AICTE norms.
- Minimum eligibility marks relaxable for SC/ST/backward classes and others as per the rules of Himachal Pradesh Government.
- Roaster for admissions as per HP Government rules.
- Criteria for admissions to professional courses shall be in accordance with HP government Notification No. EDN (TE) F (10) 2/2018 dated 4th May 2018.



# Faculty of Agriculture



## Prof Y S Negi

PhD, Dean

An agricultural and natural resource economist by interest and training, Prof. Negi has his PhD from the University of California, Berkeley. He is a well known teacher and researcher and has handled a number of projects in the field of agriculture, natural resource economics and agribusiness management. Before joining Shoolini University, Prof. Negi also served at the Agro-economic Research Centre, Shimla, HPKV, Palampur, and Dr YS Parmar University, Nauni, Solan. He has been on different committees as a socio-economic expert at IHS (UGC centre of excellence) HP University; ICFRE, Dehradun, HFRI, Shimla.



## Faculty of Agriculture

The Faculty of Agriculture aims to instill in our graduates a variety of technical and managerial skills to prepare them to take challenges of the fast changing field of agriculture. The four year graduate degree programme of the Faculty is being run as per the guidelines of the Indian Council of Agricultural Research. Students have the option to choose electives in the second year of the programme. Course modules like Rural Agriculture Work Experience & Agro-industrial Attachment and the experiential learning programme give the students a hands-on experience and confidence to face the real life challenges in their agri-entrepreneurial endeavours. Growth and development of agriculture is important for overall economic development as the expansion of market for industrial goods and services hinges on agriculture growth. Agriculture would continue to require trained human resource in its various sub-disciplines, especially scientific agriculture. Agri-graduates would thus have a variety of career choices with lucrative compensation packages.

## School of Agriculture

Being an agro-based economy, India has made rapid strides in agriculture sector. Efforts are being made to improve food production in the country and doubling farmer's income through diversified farming coupled with product processing. The need is to associate processing units along with the farm produce so that the farmers, particularly in hilly areas, are able to raise their economic status. Modern agriculture practices, however, have emerged as highly knowledge based systems. Accordingly, our farmers require agriculture education at all levels so that they are better equipped to handle various challenges, especially that of globalization. We are committed to produce able agriculture scientists and engineers, who are well equipped to meet the challenges of climate change and nascent second green revolution.

### Faculty Members

#### Adjunct Faculty

**Prof SC Tewari**, PhD, (Agricultural Economics)

**Prof DR Sharma**, PhD (Genetics)

**Prof UK Kohli**, PhD (Vegetable Sciences)

### Professors

**Prof Y S Negi**, PhD; Wildland Resource Sciences Economics, USA

**Prof GK Sharma**, PhD; Agro Forestry

**Prof Satish Kumar Gupta**, PhD; Plant Pathology

**Prof KC Sharma**, PhD; Horticulture Entomology

**Prof DD Sharma**, PhD; Extension Education

**Mr Mukesh Goswami**, MBA, Director

### Associate Professors

**Dr Ravinder Nath**, PhD

### Assistant Professors

**Dr Santanu Mukherjee**, PhD

**Dr Shweta Sharma**, PhD

**Dr Sanchit Thakur**, PhD

**Dr Rajendra Kumar**, PhD

**Dr Devanshi Pandit**, PhD

**Dr Ratika Kayastha**, PhD

**Dr Kratikeya Choudhary**, PhD

**Dr Vinaykumar Rachappanavar**, PhD

**Dr Anshul Kumar**, PhD

**Dr Neeraj Singh Parihar**, PhD

**Dr Vinay Chandel**, PhD

**Dr Bhagyashree Bhatt**, PhD

**Dr Sunakshi Gautam**, PhD

### Facilities

Agriculture farms -3; crop cafeteria, apiary, vermicomposting unit, dairy farm, milk chilling plant, biogas, spectrophotometer, well-equipped UG/ PG/ Research Labs.

### Academic Programmes

- B Sc (Hons) Agriculture
- M Sc Agriculture (Specialization: Entomology, Plant Pathology, Agriculture Economics, Agriculture Extension Education, Agronomy, Soil Science, and Plant Breeding and Genetics)

- PhD Forestry
- PhD Agriculture (Agronomy, Agricultural Extension Education, Entomology, Plant Pathology, Soil Science, Plant Breeding and Genetics)

## Academic Programmes – Eligibility & duration

### **BSc (Hons) Agriculture**

Eligibility: 10+2 in PCM/ PCB with minimum 60% marks

Duration: 8 semesters

### **MSc Agriculture (Specialization: Agriculture Extension Education/ Agronomy/ Soil Science/ Entomology/ Agricultural Economics/ Plant Pathology/ Plant Breeding and Genetics)**

Eligibility: BSc Agriculture/Horticulture with 6/10 OGPA or 60%.

Duration: 4 semesters

## Basis of Admissions:

**NEET/JEE/ SAT** or Shoolini University's multiple choice entrance test, and faculty interaction

**MSc Agriculture:** Shoolini University's multiple choice entrance test, and faculty interaction

- Reservation of seats for bonafide Himachali/ SC/ ST/ physically handicapped/economically weaker section candidates as per the rules of Himachal Pradesh & Central Government.
- Number of seats for Lateral Entry as per AICTE norms.
- Minimum eligibility marks relaxable for SC/ST/backward classes and others as per the rules of Himachal Pradesh Government.
- Roaster for admissions as per HP Government rules.
- Criteria for admissions to professional courses shall be in accordance with HP government Notification No. EDN (TE) F (10) 2/2018 dated 4th May 2018.

### **PhD Forestry**

Eligibility: Two year's master's degree in Agriculture/ Horticulture/ Forestry or any related discipline with minimum 55% marks OR 4-year bachelor's degree with Research in related discipline with minimum CGPA of 7.5/10 or 75% marks

Duration: 6 semesters

### **PhD Agriculture (Agronomy, Agricultural Extension Education, Entomology, Plant Pathology, Soil Science, Plant Breeding and Genetics)**

Eligibility: Two-year master's degree in Agriculture/ related discipline with minimum of 55% marks OR 4-year bachelor's degree with Research in related discipline with minimum CGPA of 7.5/10 or 75% marks

Duration: 6 semesters



# Other Information

## Scholarships

To attract meritorious students and as a part of its social responsibility, Shoolini University has instituted significant number of scholarships. This initiative of Shoolini University is aimed at rewarding the hard work of students towards achieving excellence in education and also removing the barriers to higher education for students from low income groups.

## Hostels

Admission to the hostels will be on annual basis, but the charges can be paid semester wise. Hostel accommodation will be allotted only on the production of ID card and hostel fee receipt. As far as possible, the wardens try to accommodate the candidates with the roommate of the same batch. However, it may not be possible to do so in all cases at time of admission. Also, certain hostel and room types are in greater demand and senior students have priority in the allotment of rooms. Provision of hostel accommodation to the admitted students is subject to availability of rooms and allotment will be made on first come first serve basis. In case of non-availability of rooms, candidates must make their own alternate arrangements. However, the university will assist the students in finding accommodation in decent paying guest houses with good antecedents.

## Hostel residents are required to adhere to the following rules and regulations:

- The right of admission to the hostels is reserved.
- Admission to the hostels will be open at the beginning of the session.
- Admission shall have to be sought afresh in every academic session and will be confirmed subject to the following conditions:
- Receipt of a duplicate admission form duly signed by the parents / guardian of the resident. At the time of admission an applicant will fill such a form and attach a duly stamped envelope addressed to his/her parents/ guardian.
- Satisfaction of the Dean Resident Students (DRS) regarding proper conduct and regular payment and dues of hostel, mess, and canteen in case of ex residents.
- Residents should not keep cash or jewelry or other valuables in their rooms. The responsibility for safety of their belongings will be entirely that of the residents, who are advised to take out an insurance against theft and fire. The management will not be responsible for any loss.
- Consumption of alcohol/intoxicants/ smoking is strictly prohibited. Anyone found indulging in the above will be liable to face disciplinary action including expulsion from the Hostel.

## **Hostel residents are required to adhere to the following rules and regulations:**

- Residents permitting or abetting unauthorized occupation of the rooms/ seats shall be liable to
- Expulsion from the hostel.
- Forfeiture of securities.
- Imposition of a fine depending upon the extent of indiscipline.
- In case of non-payment of dues or violation of any one of the hostel rules by a resident, the DRS may get his/her room locked/vacated.
- Every resident shall be responsible for the safety of the furniture/fixtures in the room. Furniture is not to be removed from one room to another. Damage to hostel property is a serious offence; any resident found guilty of damaging hostel property will be liable to disciplinary action as per hostel rules including expulsion from the hostel / university.
- Use of electrical appliances, other than permitted ones, is strictly prohibited in the hostel.
- Residents should observe strict economy in the use of electricity and water. They are required to switch off the lights, fans and other appliances as and when they leave their rooms, common room and dining hall. They should keep the geysers in the bathrooms off when not in use.
- Residents are not to tamper with the electrical and sanitary installations. The cost of repair/ replacement due to any damage done to them will be realized from the residents.
- Students are not allowed to carry mess plates in their rooms. Food will be served in the room only if a student is sick, on depositing Identity card.
- Hostel allotment is for one year. A student cannot leave the hostel in mid semester.
- During summer break, all students have to vacate the rooms and put their belongings in cloak rooms.
- Hostel fee is subject to revision.
- Students have to keep their rooms neat and clean. Their rooms will be inspected by wardens periodically.  
Washing of clothes (except under clothes) in the hostel is prohibited. Laundry services are provided and are to be used by the students.
- Parents/Visitors are not allowed entry beyond the designated area or visiting room as it shall disturb other students.
- Possession, distribution and consumption of alcohol, prohibited drugs, chew able tobacco, smoking in the hostel complex is not allowed.
- Students will follow proper channels for getting their problems addressed.
- Parents, friends and visitors are not permitted to stay in resident's room.



- Hostel charges are to be deposited for the whole academic year at the time of admissions. Under special circumstances, it may be paid in maximum of two installments but with the prior permission of the Vice Chancellor. Hostel charges once paid are not refundable. In case a student leaves the hostel with prior permission of the University Authority, they shall have to pay the room rent for the entire academic year.
- Failure to comply with the hostel rules may result in a fine up to Rs 1,000 or expulsion from the hostel or institute or both depending upon the gravity of the violation. In case of expulsion, the student will forfeit all the deposits and shall not be eligible for any claim.
- Disrespect to DRS Superintendents, Chief Warden & hostel wardens will lead to expulsion from the hostel.

### **Dates for the payment of all fees & other charges**

- First semester (new admissions) at the time of admissions
- Subsequent semesters  
2nd / 4th /6th /8th sem: 1-15 December each year  
3rd /5th /7th sem: 1-15 May each year
- Late fee of Rs 50/- per day will be charged if the fees are not paid by due date (vide Dept of Higher Education, Govt of HP notification No. EDN-A-Kha(9)-15/2018-Fee, dated 7th April, 2018)

### **Transportation**

Transport facilities are available for students and faculty of the university from Solan and surrounding areas such as Nauni, Zero Point (junction of Solan- Oachghat), Kasauli, Parwanoo, Dharampur, Kumarhatti, Rajgarh and Shimla. Students desiring to avail the bus facility may register with the University's Accounts Office at City Office, SILB, The Mall, Solan or with the Transport Coordinator, Bajhol Campus. The details of the transportation charges from various places can be obtained from the offices of the Registrar/Admissions/ Transport. No refund shall be permitted under any circumstances, even if the student opts not to avail the facility during the middle of the semester.

### **Registration**

1. All students must register with the University after their admission and again at the beginning of each semester as notified from time to time.
2. Only those students shall be allowed to register who have paid the full semester fee and hostel / transportation charges as applicable for the ensuing semester.
3. Failure to complete registration in time will lead to cancellation of admission. In that case, they have to seek readmission.

## Refund of Fee

**As per UGC norms the refund of fees will be as follows:**

<b>%age of refund of aggregate fees withdrawal of admission is served</b>	<b>Point of time when notice of withdrawal of admission is served</b>
90 %	15 days before the formally notified last date of admissions
80 %	Not more than 15 days after the formerly notified last date of admissions
50 %	More than 15 days but less than 30 days after formerly notified last date of admissions
00 %	More than 30 days after formally notified last date of admissions

## Dress Code

Shoolini University has made it mandatory for all undergraduate students to follow a proper dress code, at least on three specified days in a week. Both boys and girls wear white shirt, gray rousers, maroon tie, and navy blue blazer with an insignia on the pocket, gray socks and black shoes. Tie and insignia shall be provided by the university at a reasonable cost. The postgraduate students, however, follow the above dress code on formal and ceremonial occasions. Students should procure dress as per dress code within two weeks from the commencement of the academic year.

## Education Loans

Shoolini University has tied up with Punjab National Bank to make easy education loan available to prospective students. The student can cover both tuition fee and hostel expenses.



## Anti-Ragging Committee

<b>Members</b>	<b>Phone Number</b>
Prof Poonam Nanda, Convener	082194-43632
Dr Deepak N Kapoor, Co-convener	096461-42349
Ms Rita, Hostel Superintendent	092183-01018
Col TPS Gill, Director Operations	099888-53703
Mr Lalit, Hostel Warden	094181 - 75744
DM Solan (Nominee of District Admn.)	0179-2223707
Dr Neeraj Gandotra, Chief Warden	094182-74612

## Commitment for Safe & Secure Campus

Chancellor Prof PK Khosla has pledged to make the University drugs, alcohol, smoking and ragging free. He solicits the support of all the parents and students to fulfill this pledge.

## Shoolini University

### Approvals/Recognitions

#### Established by State Government

Shoolini University is established by the State Act of Government of Himachal Pradesh (Notification No. EDN -A-Gha(8) - 10/2006 dated 15th October, 2009).

#### Recognised by University Grants Commission

Shoolini University became an officially recognized university by UGC in February 2011 (UGC F No. 8-1/2010 (CCP)-1/PU), dated 7.2.2011).

#### Approved by Pharmacy Council of India (PCI)

School of Pharmaceutical Sciences is approved by Pharmacy Council of India (S. No. 4/917. www.pci.nic.in

#### NBA Accreditation

The B Pharmacy programme is accredited by National Board of Accreditation (NBA).

#### AICTE Approval

As per law, Universities do not require AICTE approval. Only institutions which are affiliated to Universities require approval. As Shoolini University is a Bonafide University established by a State Act, its courses do not require AICTE approval. This standing of law is notified in the case of Bharathidasan University vs AICTE.

#### NAAC Accredited

B ++ Grade from National Assessment and Accreditation Council, Bangalore

#### How to Apply for Admission?

1. Select your course of choice at [www.shooliniuniversity.com](http://www.shooliniuniversity.com) and satisfy yourself about your eligibility for the course.
2. Start filling the Admission Form online at [www.shooliniuniversity.com](http://www.shooliniuniversity.com) through our 'Apply Now' tab.
3. On submission of your complete online admission form, you will be required to pay Rs. 850/-.
4. You can download the free copy of the university prospectus online through our website.
5. **Alternatively, you can buy the physical prospectus from Shoolini University City Office**



## **Jurisdiction**

In case of any dispute, decision of the Registrar of Shoolini University will be final & the territorial jurisdiction for any legal action shall be limited to Solan (Himachal Pradesh) only.

## **How to reach?**

**By Road:** Well-connected by an extensive network of roads. Solan can be reached conveniently, by a taxi or bus from Delhi, Chandigarh and Kalka.

**By Air:** The nearest airports are at Chandigarh and Shimla

**By Rail:** The nearest board gauge railway station is at Kalka, while the closest narrow gauge rail station is at Solan.

## **Some facts**

1hour 30 minute drive from Chandigarh International Airport

1hour drive from Shimla, the scenic capital of Himachal Pradesh

30 minute drive from the beautiful hills of Kasauli

20 minute drive from Solan, closest narrow gauge rail station

30 minute drive from Barog